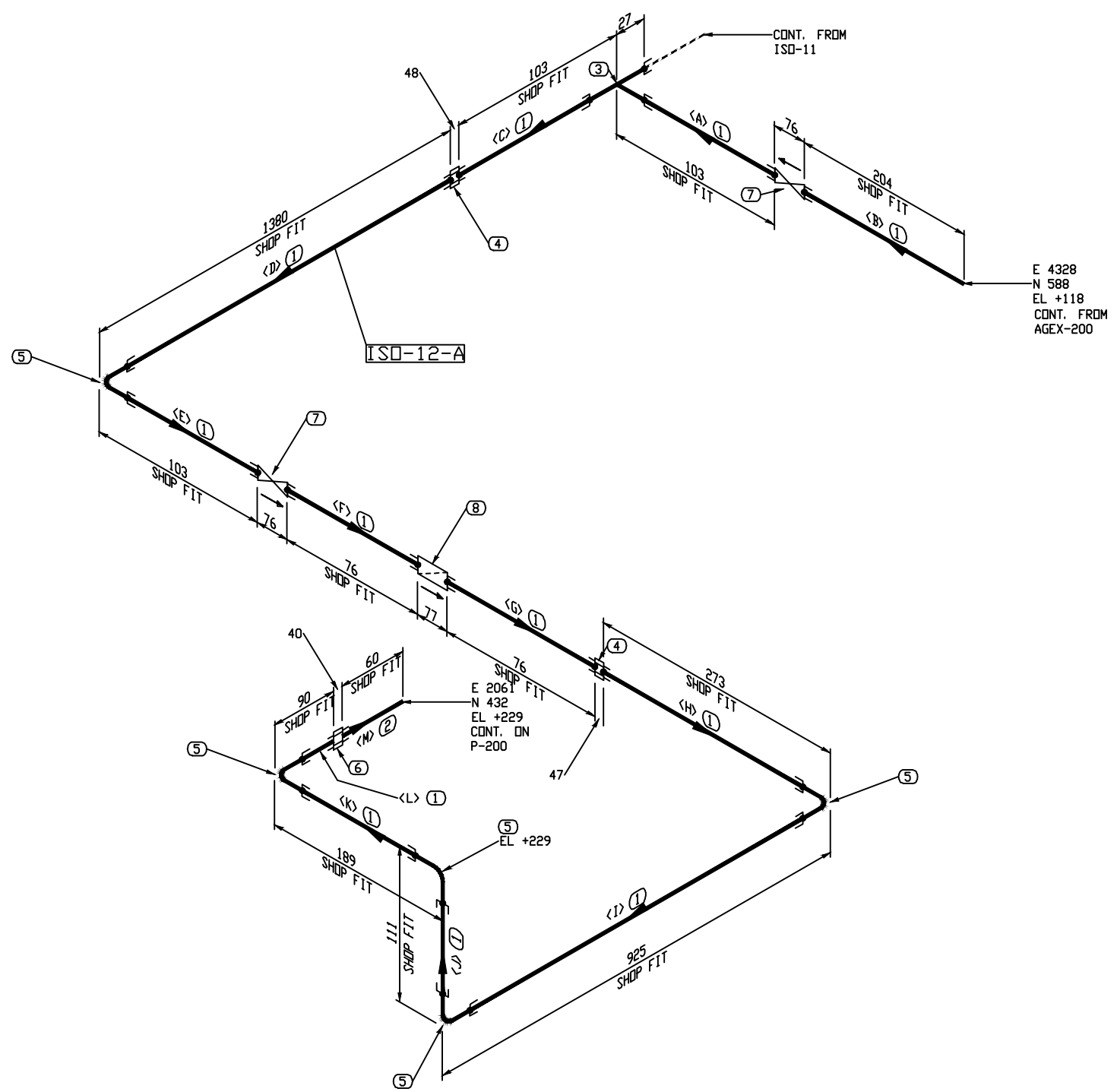
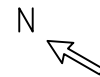


The information contained in this drawing is the confidential property of Platinum Energy Services ULC. No part thereof shall be reproduced or communicated to a third party without written authorization from Platinum Energy Services ULC.



BILL OF MATERIAL					
MARK	SIZE	DESCRIPTION	QTY	WEIGHT	
1	1	PIPE, S/80 SMLS, SA-106-B PBE	3309	MM	10.7
2	1	PIPE, S/80 SMLS, SA-106-B TBE	60	MM	0.2
3	1X1	TEE, STR. SW 3000LB, SA-105N	1		1.5
4	1	UNION, SW 3000LB, SA-105N	2		2.7
5	1	90 ELL, SW 3000LB, SA-105N	5		5.1
6	1	UNION, SWxTHRD 3000LB, SA-105N	1		1.4
7	1	GATE VALVE, 800LB SW	2		7.6
8	1	Y-STRAINER, 800LB SW	1		2.4
TOTAL FABRICATION WEIGHT					31.2

CUT PIPE LENGTH

PIECE NUM	LENGTH (MM)	SIZE (INCH)
<A>	76	1
	204	1
<C>	76	1
<D>	1353	1
<E>	76	1
<F>	76	1
<G>	76	1
<H>	246	1
<I>	871	1
<J>	57	1
<K>	135	1
<L>	63	1
<M>	60	1

THRD. & S.W. PIPING
 - SHOP RUN
 - SHOP CHECK
 - SHOP SUPPORT ON ASSEMBLY

NOTES:

- REGISTERED QUALITY CONTROL PROGRAM AQP 1084 FOR FACILITY AT 7550-114 AVE SE CALGARY AB.
REGISTERED QUALITY CONTROL PROGRAM AQP 1316 FOR FACILITY AT 502 MITCHELL STREET NORTH REDCLIFF AB.
- EXTERIOR & INTERIOR OF PIPE TO BE FREE OF WELD SLAG, SPATTER, GREASE, MOISTURE, ETC.
- ALL DIMENSIONS ARE IN MILLIMETERS, UNLESS OTHERWISE NOTED.
- ALL PIPING CUT LENGTHS ARE CALCULATED WITH A (3 mm) WELD GAP.
- FOR TACK WELDS USE PES-WPS-02
- DESIGN PRESSURE EQUALS MAWP.

LINE NUMBER 1'-NPT_300_GLYCOL REBOILER TO PUMP		SPEC 600#	FLUID SERVICE NORMAL FLUID SERVICE	PIPE CODE ASME B31.3 (LATEST EDITION & ADENDA)	WPS PES-WPS-01/03		CLIENT STOCK
FITTING TO PIPE PES-WPS-03	SOL/TOL/WOL PES-WPS-01	TRANSITION WELD PES-WPS-21	PIG BAR WELD PES-WPS-01	RFSO FLANGE PES-WPS-01	SOCKET WELD PES-WPS-01		DES. PRESS. 9928 kPa (1440 PSI)
				DES. TEMP. 38°C (100°F)	SANDBLAST SSPC-SP3	CALGARY, ALBERTA DRAWN BY LL 17-07-07 CHK'D BY BX 17-07-07 APP'D BY DG 17-07-07	FROM AGEX-200 & ISO-11
				MMDT -29°C (-20°F)	PRIME (1) COAT OF WARM GRAY DTM		TO P-200
				TEST PRESS. 14892 kPa (2160 PSI)	PAINT (1) COAT OF WARM GRAY DTM	JOB NO 30086	
				RADIOGRAPHY 10%	INSUL NO	DWG. NO. 30086-ISO-12	
				PWHT NO	HEAT TRACE NO	SHT 1 OF 1	
				IMPACT TEST NO		REV. 0	
REV. REVISION DESCRIPTION			DATE	BY	CHK'D	APP'D	DESIGN DATA