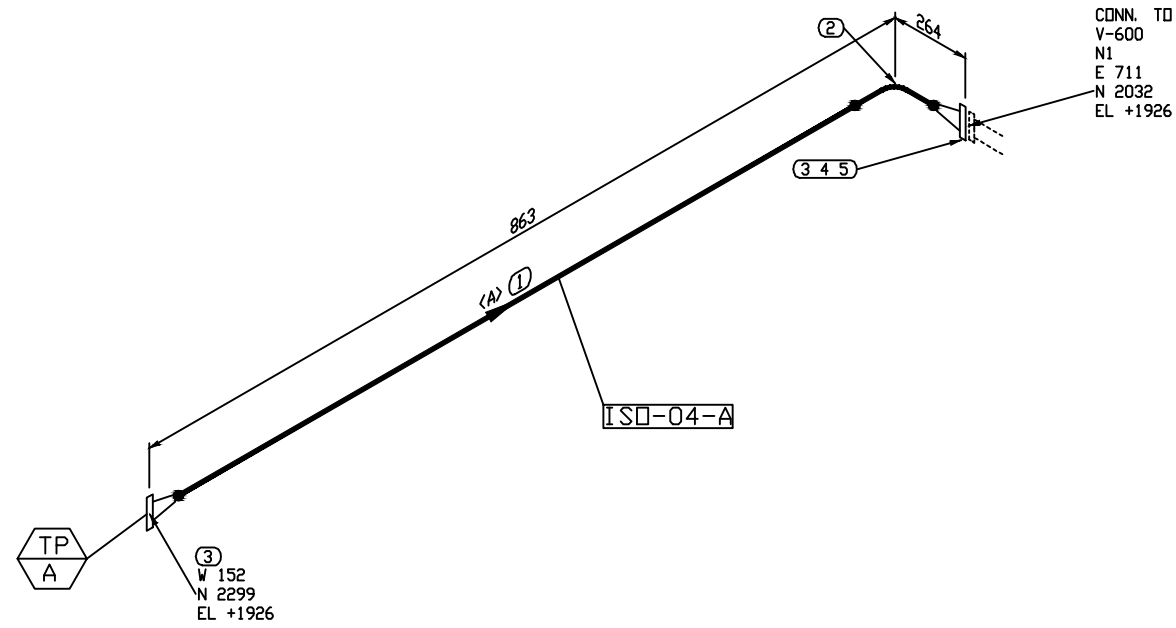
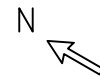


The information contained in this drawing is the confidential property of Platinum Energy Services ULC. No part thereof shall be reproduced or communicated to a third party without written authorization from Platinum Energy Services ULC.



BILL OF MATERIAL				
MARK	SIZE	DESCRIPTION	QTY	WEIGHT
1	4	PIPE, S/80 SMLS, SA-106-B	596 MM	9.6
2	4	ELL, 90 LR S/80, SA-234-WPB	1	4.0
3	4	FLG, RFWN 600LB S/80 BDRE, SA-105N	2	38.1
4	4	GASKET, RF 600LB, 1/8" FLEXICARB FLEXIBLE GRAPHITE, 316SS	1	1.0
5	7/8X5 3/4	STUD BOLTS W/ 2 NUTS, 193-B7M/194-2HM	8	1.0
TOTAL FABRICATION WEIGHT				53.6

CUT PIPE LENGTH

PIECE NUM	LENGTH (MM)	SIZE (INCH)
<A>	596	4

NOTES:

- REGISTERED QUALITY CONTROL PROGRAM AQP 1084 FOR FACILITY AT 7550-114 AVE SE CALGARY AB.
REGISTERED QUALITY CONTROL PROGRAM AQP 1316 FOR FACILITY AT 502 MITCHELL STREET NORTH REDCLIFF AB.
- EXTERIOR & INTERIOR OF PIPE TO BE FREE OF WELD SLAG, SPATTER, GREASE, MOISTURE, ETC.
- ALL DIMENSIONS ARE IN MILLIMETERS, UNLESS OTHERWISE NOTED.
- ALL PIPING CUT LENGTHS ARE CALCULATED WITH A (3 mm) WELD GAP.
- FOR TACK WELDS USE PES-WPS-02
- DESIGN PRESSURE EQUALS MAWP.

LINE NUMBER		4" -600_M_S-600-GAS INLET		SPEC	600#	FLUID SERVICE	NORMAL FLUID SERVICE		PIPE CODE	ASME B31.3 (LATEST EDITION & ADENDA)		WPS	PES-WPS-02/04		CLIENT	STOCK							
DES. PRESS.		9928 kPa (1440 PSI)		DES. TEMP.		38°C (100°F)		MMDT		-29°C (-20°F)		TEST PRESS.		14892 kPa (2160 PSI)		RADIOGRAPHY		100%					
CA		3.2mm (0.125")		SANDBLAST		SSPC-SP3		PRIME		(1) COAT OF WARM GRAY DTM		PAINT		(1) COAT OF WARM GRAY DTM		INSUL		NO					
HEAT TRACE		NO		PWHT		YES		IMPACT TEST		NO		DRAWN BY		LL		17-07-07		PROJECT		24" OD X 28'-0" S/S 1440 PSI AB SOUR DEHY. PACKAGE PIPING ISOMETRIC			
FROM		TP-A (SKID EDGE)		TO		V-600 (N1)		JOB NO		30086		DWG. NO.		30086-ISO-04		SHT		1 OF 1		REV.		0	
REV.		REVISION DESCRIPTION		DATE		BY		CHK'D		APP'D		DESIGN DATA		APP'D BY		DG		17-07-07					

