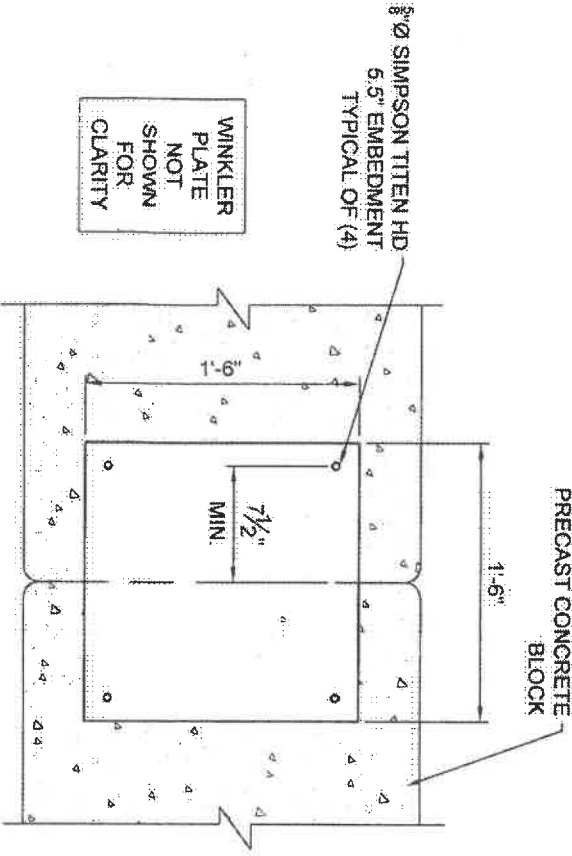
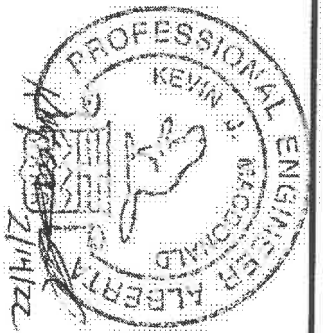


11/4/2020 11:42 AM

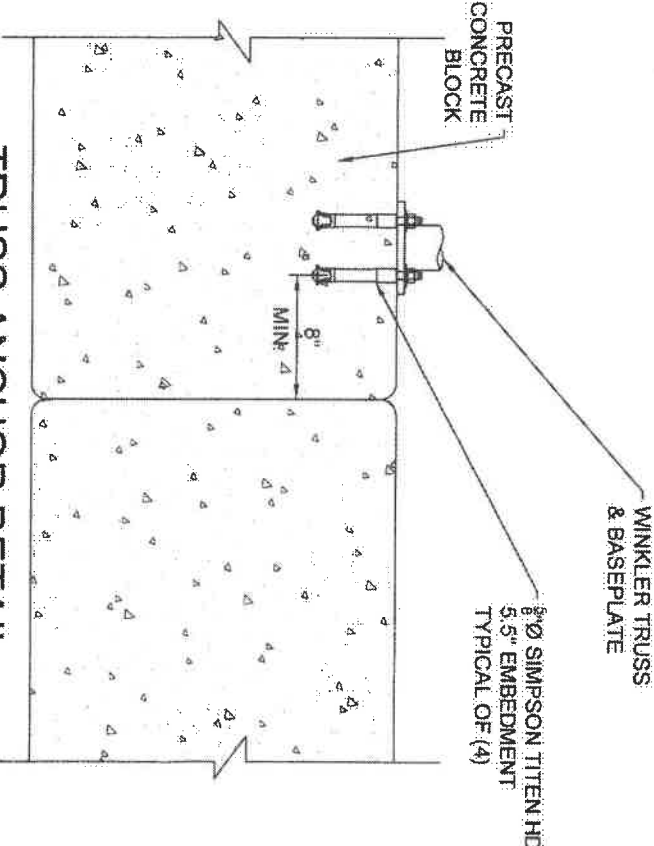
ASSUMED SOIL BEARING 100 kPa  
 FACTORED DESIGN LOADS (CALGARY, AB)  
 SNOW LOAD  $S_s = 1.1$   $S_r = 0.1$   
 DEAD LOAD 0.1 kPa  
 WIND LOAD ( $q$  &  $w_0$ ) 0.48 kPa  
 IMPORTANCE FACTOR: LOW  
 CONCRETE: 32MPa @ 28 DAYS  
 5-8% AIR

LATERAL LD 11 kN  
 UP/LIFT 2 kN  
 DOWN LD 16 kN  
 FOR TRUSS ANCHORAGE PLATE AND BOLTS @ 10' o/c  
 SEE WINKLER PLAN

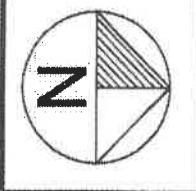
PERMIT TO PRACTICE  
 HSP CONSULTANTS INC.  
 Signature: *K. Macdonald*  
 Date: Feb 14/22  
 PERMIT NUMBER: P10211  
 The Association of Professional Engineers, Geologists and Geophysicists of Alberta



**BLOCK ANCHOR PLATE  
 SIDE VIEW**  
 SCALE: 1" = 1'-0"



**TRUSS ANCHOR DETAIL  
 ELEVATION VIEW**  
 SCALE: 1" = 1'-0"



DATE: FEBRUARY 11, 2022  
 DRAWN: T. GOVE  
 CHKD: K. MACDONALD  
 SCALE: NTS

CLIENT: WINKLER STRUCTURES  
 13007 - ROAD 19 W  
 WINKLER, MB  
 PROJECT: 30' DOME FOUNDATION DETAIL  
 7770 44TH ST.  
 CALGARY, AB

REF: **HSD Engineering Services**  
 HSP Inc.  
 5715 Westgate Drive  
 Long Sault, ON  
 Canada K0C 1P0  
 T: 613-652-3289  
 F: 613-657-0125  
 www.hsp.ca

PROJ NO: 10764  
 DRAWING No: SK1  
 SHEET 1 of 1  
 REVISION: A

**General Notes:**  
 This drawing including information hereon, remain the properties of Winkler Canvas. Any reproduction in whole or in part without the expressed written consent of Winkler Canvas is prohibited.

**Erection and Maintenance:**  
 Structure must be erected and all components installed according to Winkler Canvas installation instructions.  
 The installer must provide a safe working environment and practices conforming to all safety regulations. All lifting devices are to be specifically designed to lift the various structural components. A spreader bar and straps may be required to eliminate the possibility of the trusses folding while lifting.  
 Erection must start at a center truss. Temporarily support first erected truss using cable or ropes before removing lifting device.  
 Cables and bents to be pre-stressed at all times.

**Material Specifications:**  
 Rolled structural tubing sections conform to ASTM A500-C  
 Ø1.00" x 0.083" Wall Tubing - 46,000 psi yield / 62,000 psi tensile  
 Ø1.99" x 0.083" Wall Tubing - 46,000 psi yield / 62,000 psi tensile  
 Ø2.375" x 0.095" Wall Tubing - 46,000 psi yield / 62,000 psi tensile  
 All structural plates conform to CSA G40.21 - 44W (300W)  
 All fabric to be R188X-6 (4 mil)

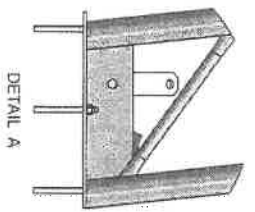
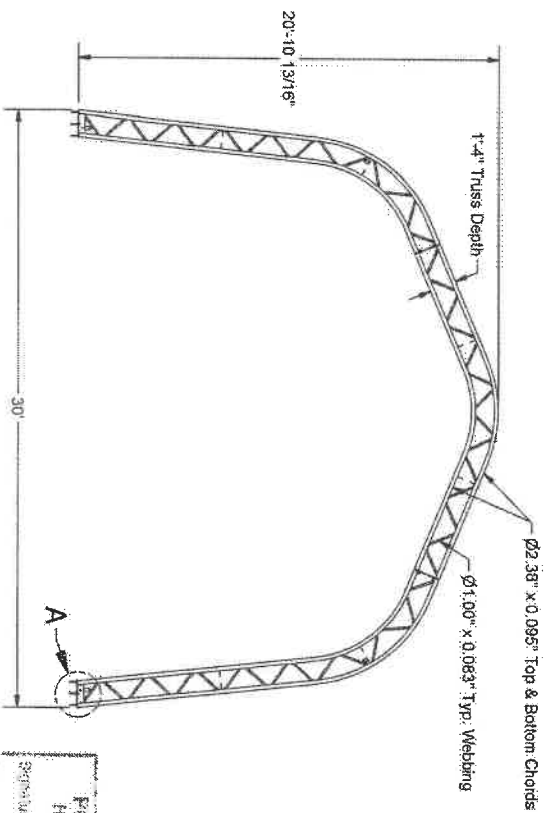
**General Design Conditions:**  
 1. Truss Spacing: 10' o/c  
 2. Building Size: 30' x 100'  
 3. Building Type: Governor  
 4. Building Use: Dry Storage  
 5. Site Condition: Sheltered  
 6. Building Location: 7770-44th ST, Calgary, Alberta, T2C 2L5  
 7. Ground Snow Load: 5 psf  
 8. Building designed in accordance with the National building code.

**Specified Foundation Loads per Each Frame End at Frame Baseplate:**  
 Max Uplift: 7 kN  
 Max Down: 12 kN  
 Max Lateral: 11 kN

**General Notes:**  
 1. Frames to be covered with a woven polyethylene fabric.  
 2. All plate material to conform to CSA G40.21, Grade 300W  
 3. All bolt & nuts to be minimum Grade 5.  
 4. Steel fabrication & erection to CSA W47.1.  
 5. Minimum welds 3/16" filled  
 6. Thickness unless noted otherwise. Root thickness to match min member size.  
 7. The engineering work presented in these drawings is limited to the structural capacity of the steel frames. Overall building design, foundation design, site development, and fire and safety requirements are by others.

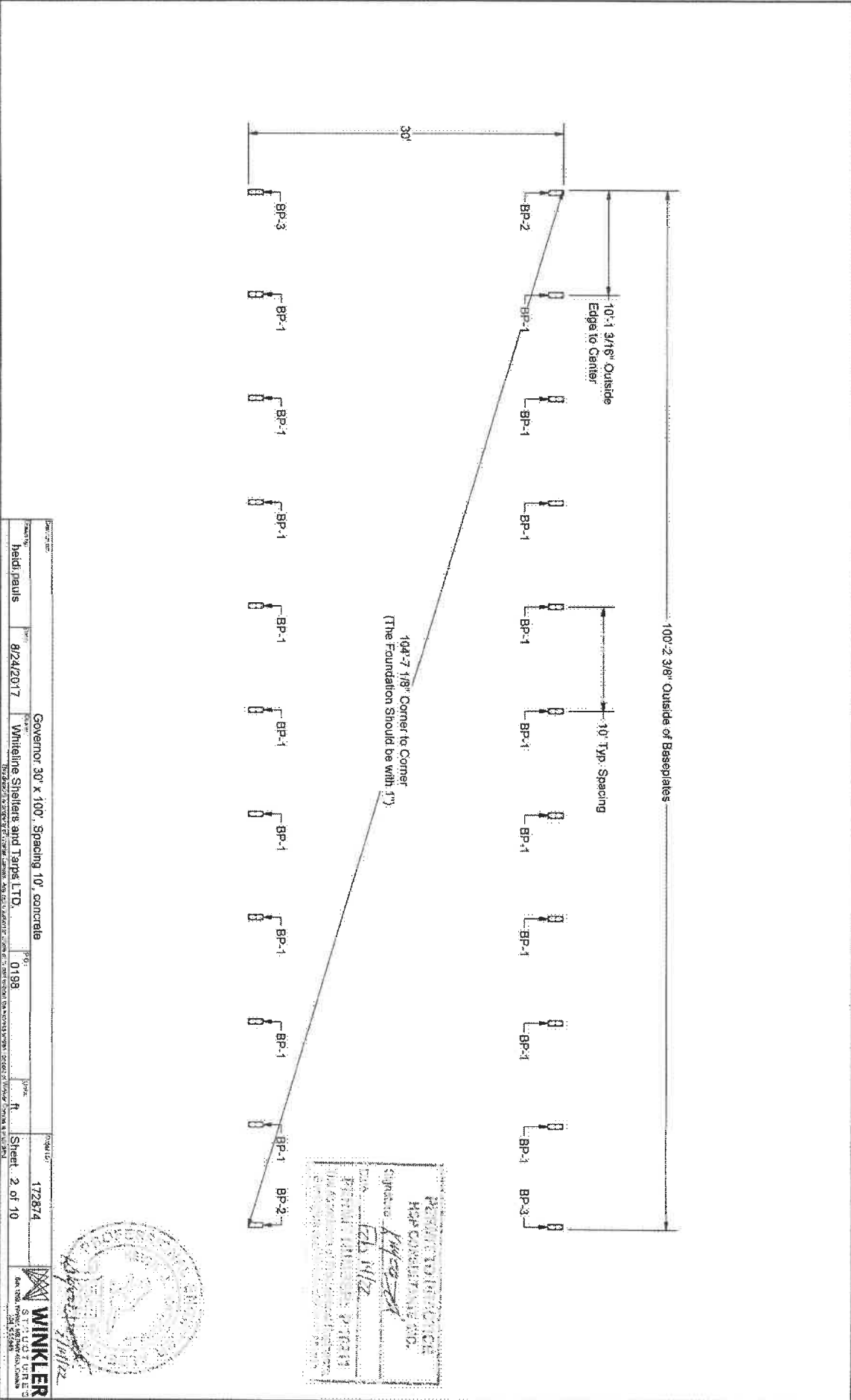
**Dealer:** Whitteline Shelters  
**Order ID:** 172874  
**Owner:**

Anchor 1/2" Installation		Units	
Design Information			
Anchor O.D.	in. (mm)	1/2 (12.7)	Sheet 1: Material Specifications / Profile
ANSI drill bit dia.	in. (mm)	1/2 (12.7)	Sheet 2: Baseplate Layout
Effective min. embedment	in. (mm)	3-1/4 (83)	Sheet 3: Baseplate Details
Min hole depth	in. (mm)	4 (102)	Sheet 4: Profile Details & Layout
Installation torque	ft-lb (Nm)	40 (54)	Sheet 5: Connection Details
Expansion element clearance hole	in. (mm)	9/16 (14.3)	Sheet 6: Cable Connection Details
			Sheet 7: Main Building Details
			Sheet 8: Tarp Details
			Sheet 9: Door End Layout & Details
			Sheet 10: Solid End Layout & Details



Contract No. 172874  
 Project No. 8/24/2017  
 Governor 30' x 100', 10' Spacing, on Concrete  
 Whitteline Shelters and Tarps LTD.  
 0198  
 Sheet 1 of 10  
**WINKLER**  
 172874  
 2017



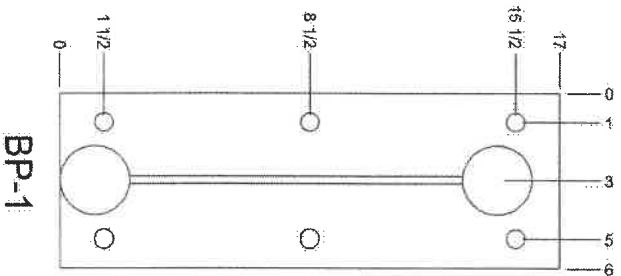


10'-7 1/8" Corner to Corner  
 (The Foundation Should be with 1")

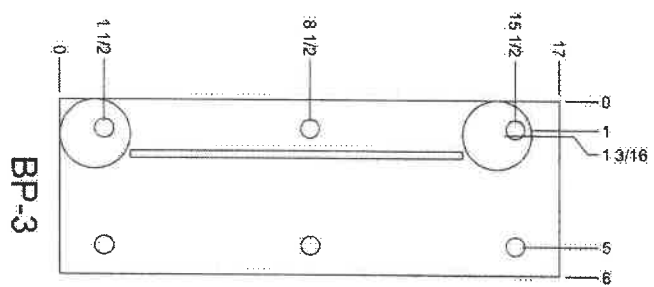
RESIDENT ENGINEER  
 HCP CONSULTANTS, INC.  
 Signature: *[Handwritten Signature]*  
 Title: *[Handwritten Title]*



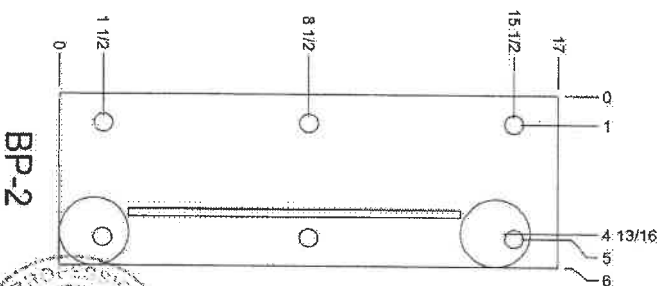
Project Name	Project No.	Project Date	Project Description	Project Location	Project Status	Project Sheet	Project No.	Project Title	Project No.
heidi.maus	8/24/2017	Whitepine Shelters and Tarps LTD.	Governor 30' x 100' Spacing 10' concrete			Sheet 2 of 10	172874	WINKLER	172874



BP-1



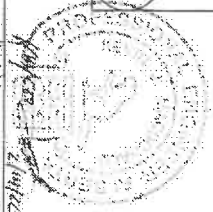
BP-3

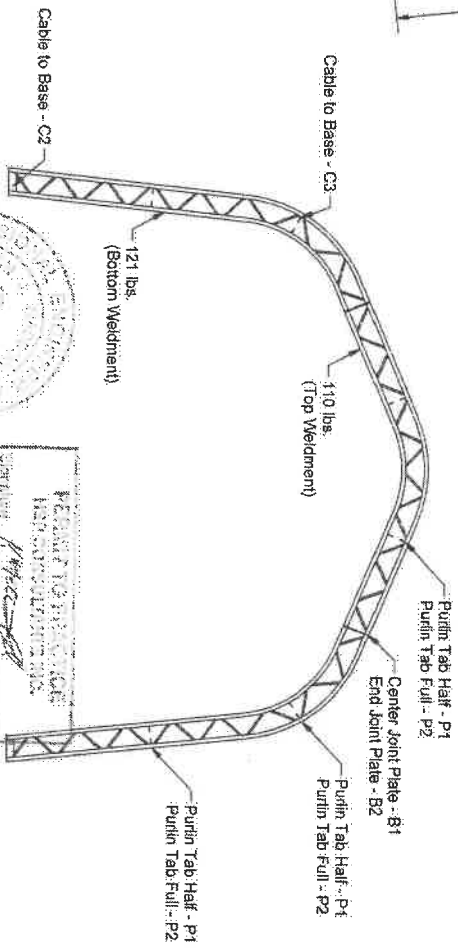
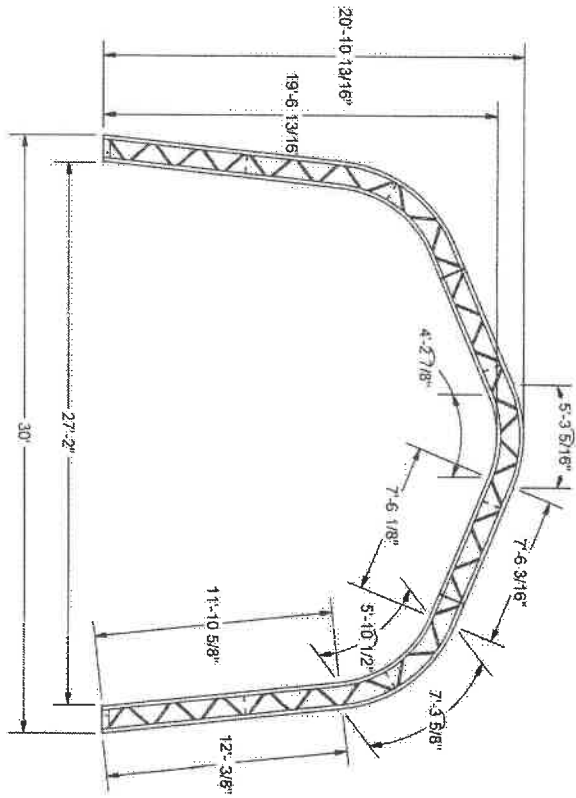


BP-2

ESTATE COLLECTION  
 MSP CONSULTING PARTNERS, LLC  
 Signature: *Kyle R. ...*  
 Date: 8/24/2017  
 Title: *...*

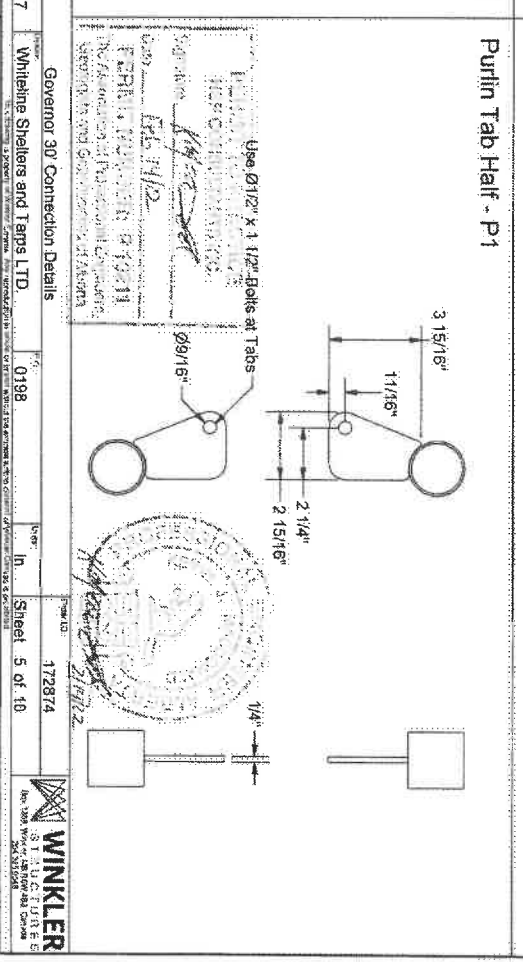
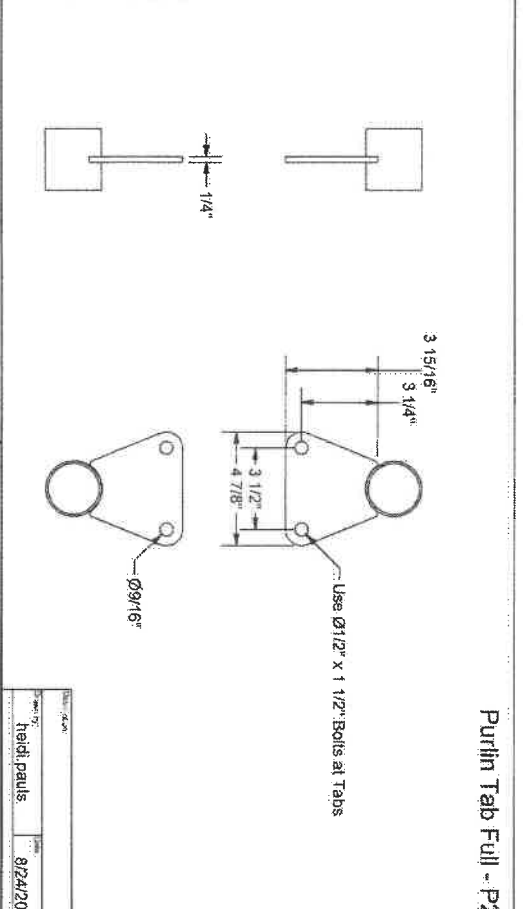
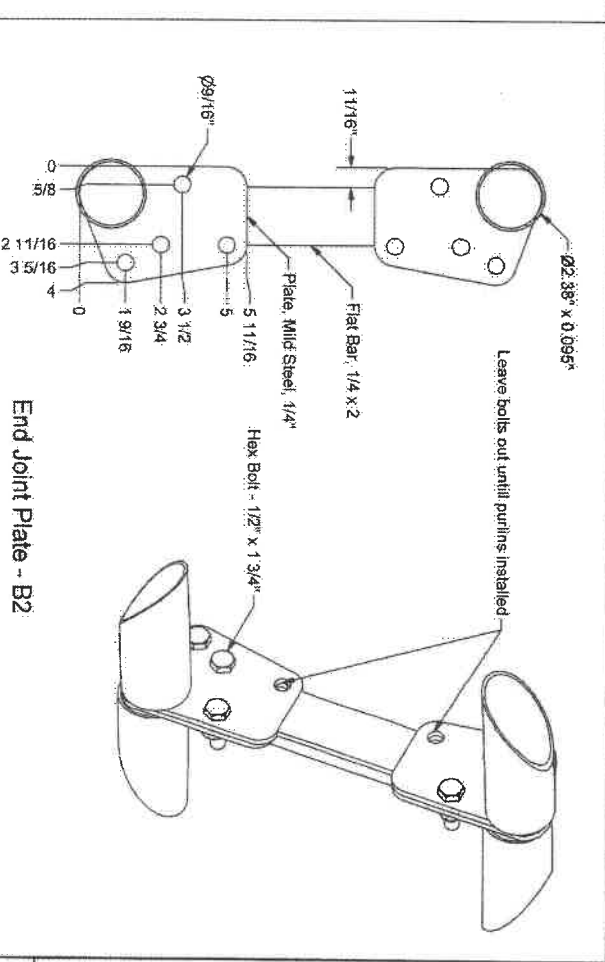
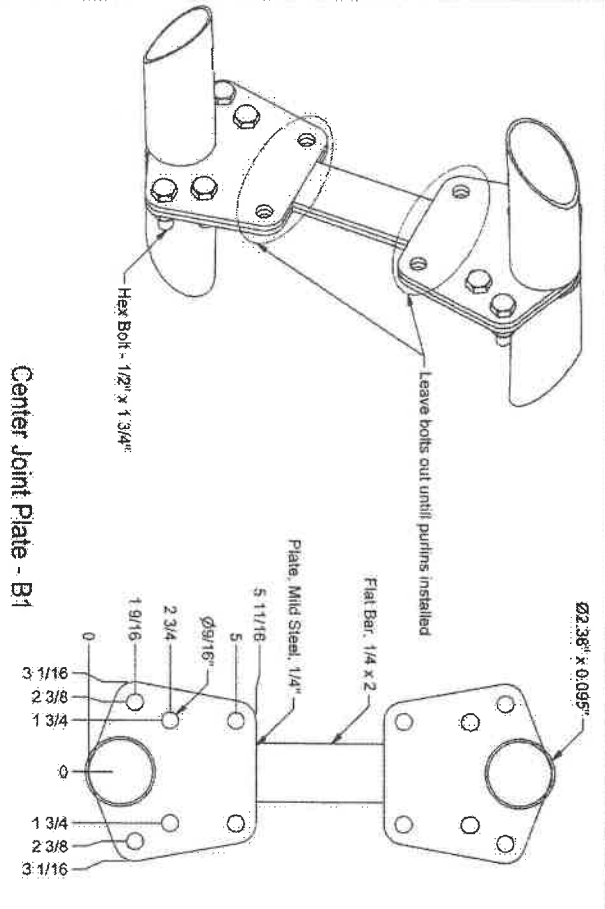
Part name	Quantity	Part no.	Proj. no.	Rev.	Drawn by	Checked by
head rails	8/24/2017	WhiteLine Shelers and Taps LTD.	0198			
Governor 30' Baseplates						
Sheet 3 of 10						
WINKLER						





Project No.	8/24/2017	Project Name	Governor 30 Profile Details & Layout	Sheet No.	4 of 10	Sheet Title	Sheet 4 of 10
Client	WhiteLine Shelters and Tents LTD.	Project No.	0198	Scale	1/2" = 1'-0"	Project No.	172974
Drawn By	CS/1/12	Checked By	CS/1/12	Project No.	0198	Project Name	Governor 30 Profile Details & Layout
Project No.	8/24/2017	Project Name	Governor 30 Profile Details & Layout	Sheet No.	4 of 10	Sheet Title	Sheet 4 of 10



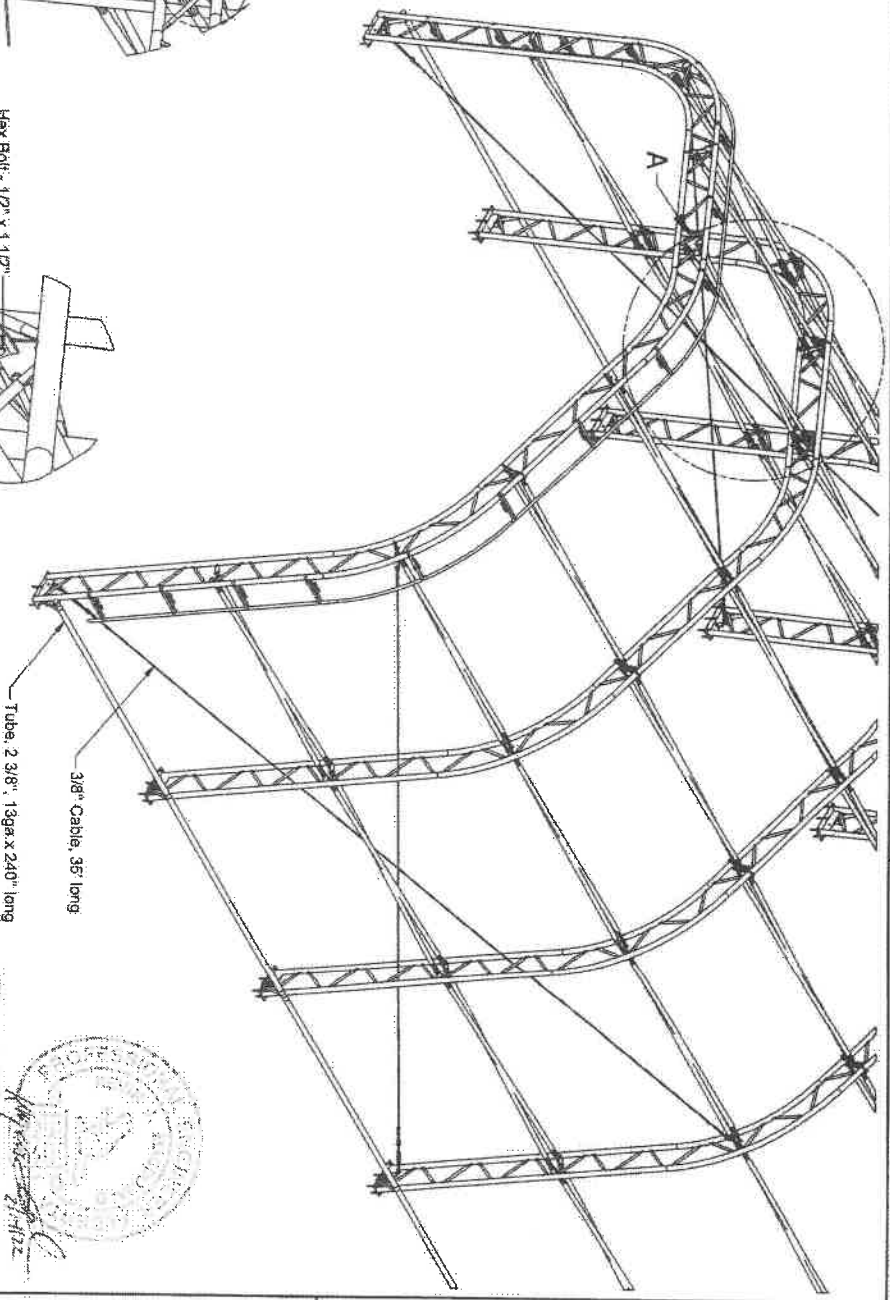
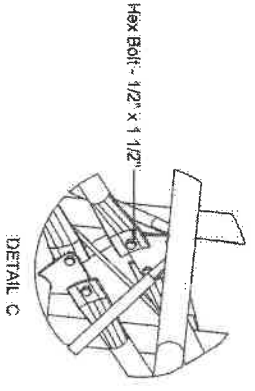
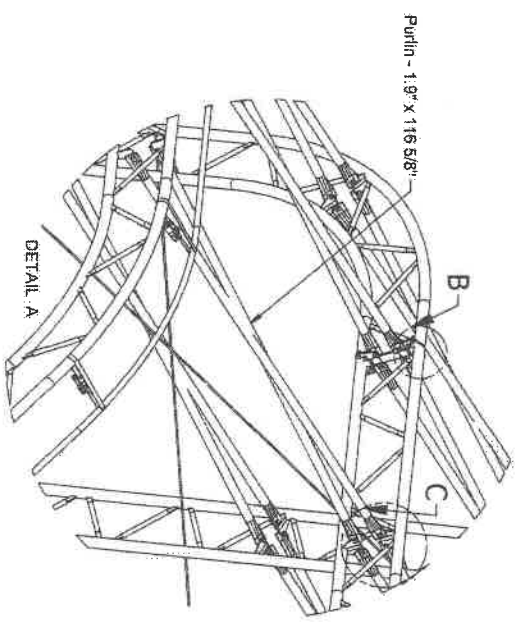
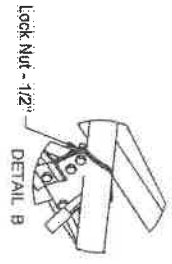


Rev. 01	172874	172874	172874	172874
Rev. 02	172874	172874	172874	172874
Rev. 03	172874	172874	172874	172874
Rev. 04	172874	172874	172874	172874
Rev. 05	172874	172874	172874	172874
Rev. 06	172874	172874	172874	172874
Rev. 07	172874	172874	172874	172874
Rev. 08	172874	172874	172874	172874
Rev. 09	172874	172874	172874	172874
Rev. 10	172874	172874	172874	172874
Rev. 11	172874	172874	172874	172874
Rev. 12	172874	172874	172874	172874
Rev. 13	172874	172874	172874	172874
Rev. 14	172874	172874	172874	172874
Rev. 15	172874	172874	172874	172874
Rev. 16	172874	172874	172874	172874
Rev. 17	172874	172874	172874	172874
Rev. 18	172874	172874	172874	172874
Rev. 19	172874	172874	172874	172874
Rev. 20	172874	172874	172874	172874
Rev. 21	172874	172874	172874	172874
Rev. 22	172874	172874	172874	172874
Rev. 23	172874	172874	172874	172874
Rev. 24	172874	172874	172874	172874
Rev. 25	172874	172874	172874	172874
Rev. 26	172874	172874	172874	172874
Rev. 27	172874	172874	172874	172874
Rev. 28	172874	172874	172874	172874
Rev. 29	172874	172874	172874	172874
Rev. 30	172874	172874	172874	172874

Whitepine Shelters and Tents LTD.  
 Governor 30' Connection Details  
 8/24/2017  
 0198  
 Sheet 5 of 10  
**WINKLER**  
 172874

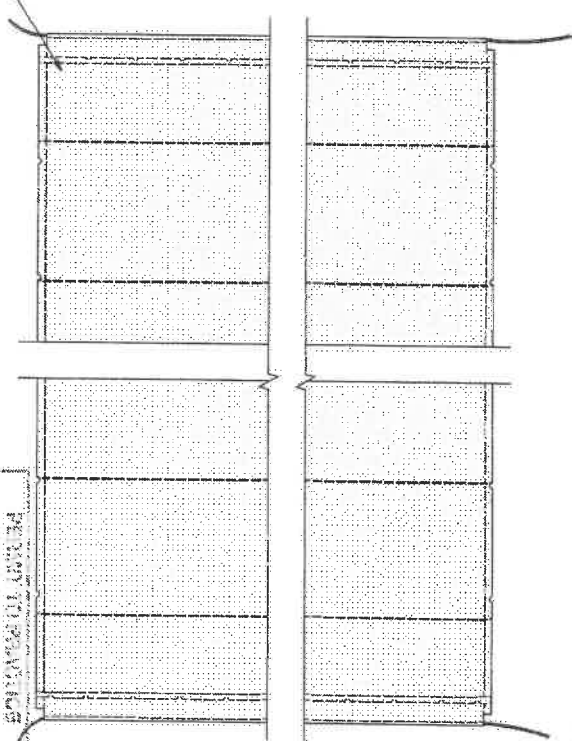
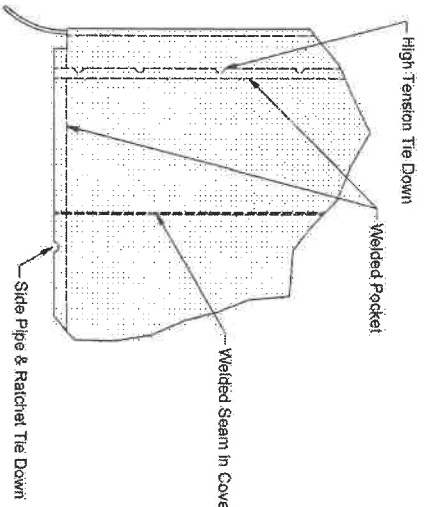
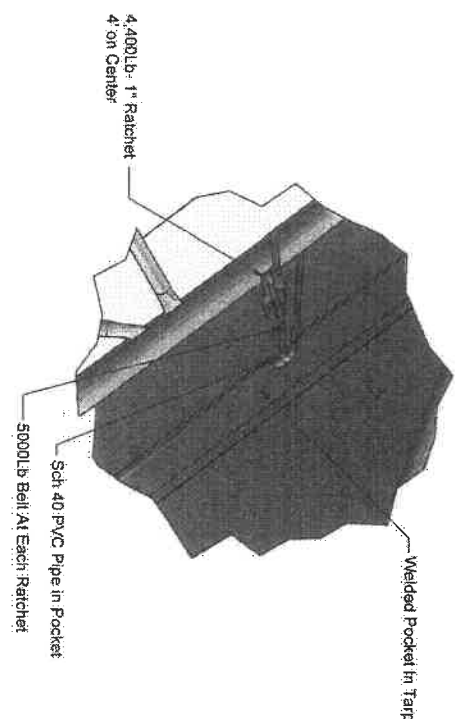
Table:

Frames Spacing	Typ. Purlin	Purlin End Bays
8' O.C.	1.90' x 0.083"	1.90' x 0.083"
10' O.C.	1.90' x 0.083"	1.90' x 0.083"
12' O.C.	1.90' x 0.083"	2.38' x 0.095"
14' O.C.	2.38' x 0.095"	2.38' x 0.095"



Governor 30' x 40', 10 Spacing on Concrete  
 Whirlwind Shelters and Tents LTD.  
 824/2017  
 0198  
 Sheet 7 of 10  
**WINKLER**  
 172874

WINKLER ENGINEERING  
 1200 CONSUMERS BLVD.  
 FORT WORTH, TEXAS 76104  
 TEL: 817-335-1111  
 FAX: 817-335-1112  
 www.winkler-engineering.com  
 Date: Feb 14/12  
 Drawn by: [Signature]  
 Checked by: [Signature]



Project	Client	Date	Issue	Scale	Sheet
Whitepine Shelters and Tarps LTD.	heidipauls	8/24/2017	0198	In	Sheet 8 of 10

172874

**WINKLER**

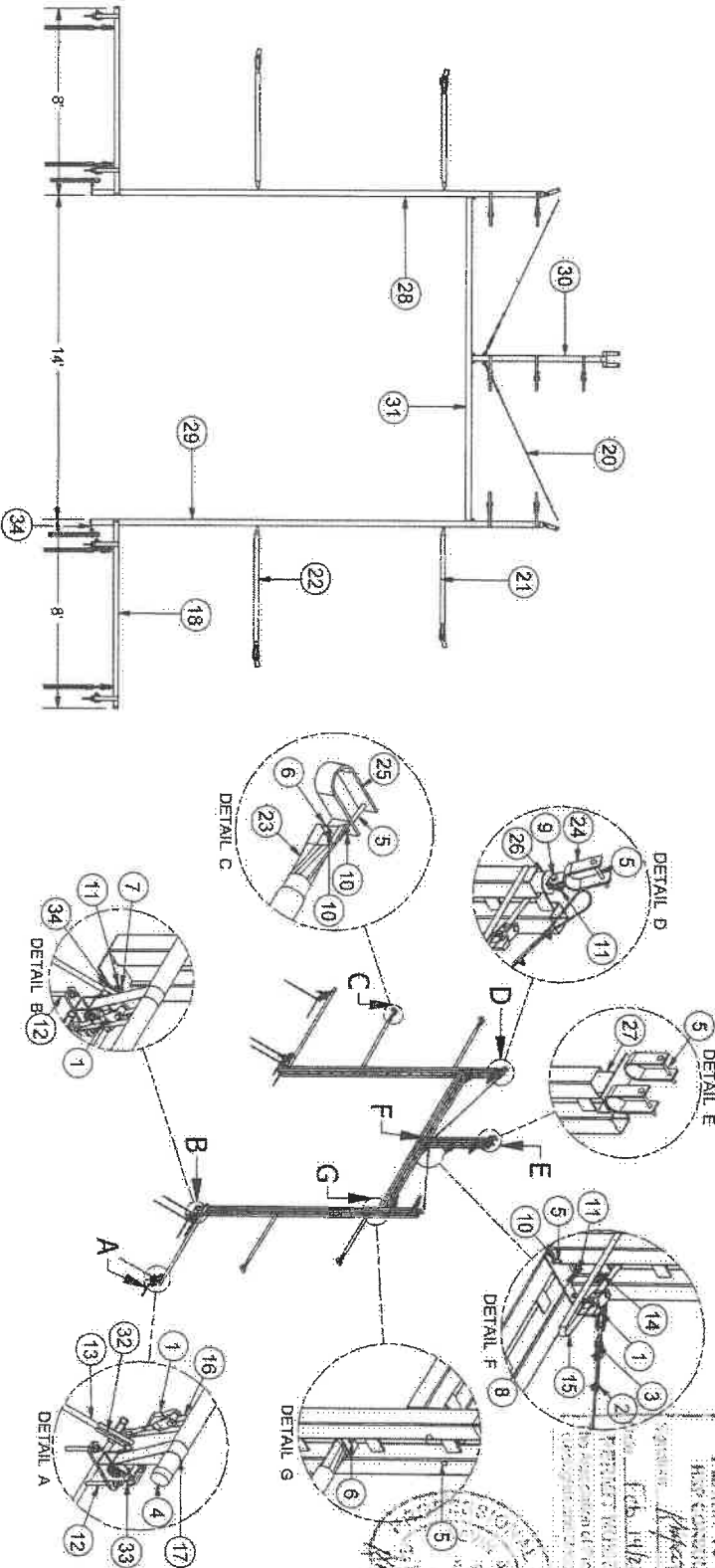
Professional Engineer  
No. 100,198  
Exp. 01/01/2020



PE Heidi Pauls  
PROFESSIONAL ENGINEER  
No. 100,198  
Exp. 01/01/2020

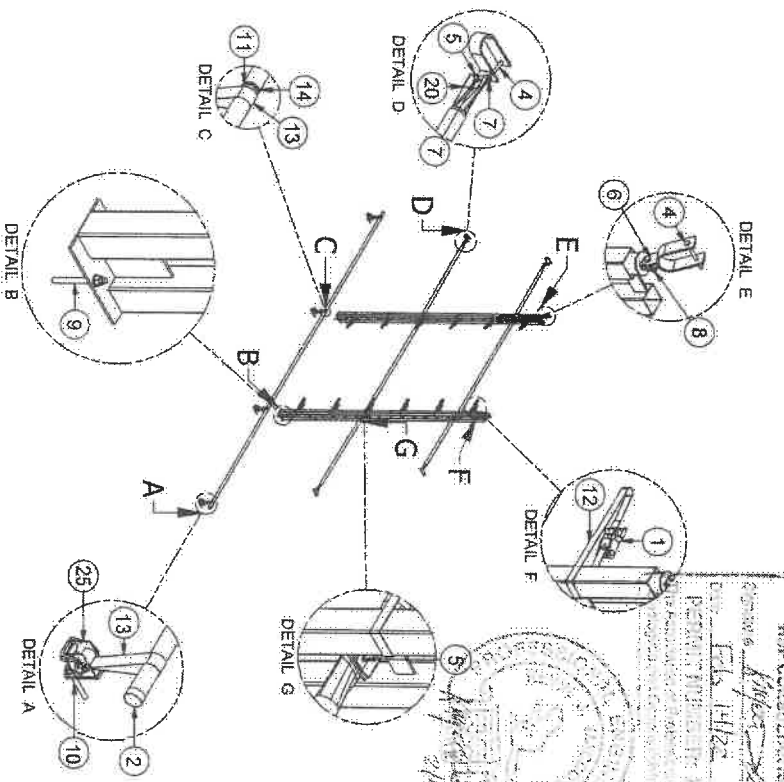
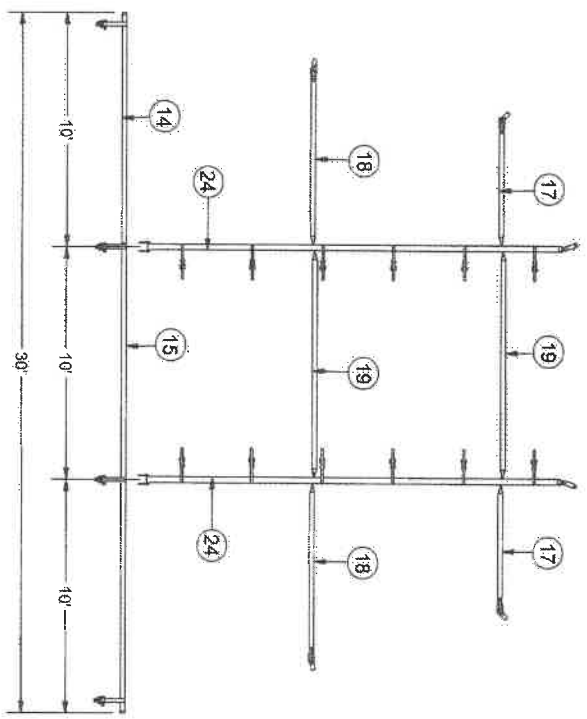


Parts List				Parts List				Parts List			
ITEM	PART NUMBER	QTY	DESCRIPTION	ITEM	PART NUMBER	QTY	DESCRIPTION	ITEM	PART NUMBER	QTY	DESCRIPTION
1	A07003	11	Ratchet 1" H.D.	12	A13294	8	Anchor Bolt Kit - 1/2" x 5 1/2"	23	RA03138009	4	Cross Brace Insert - 2 3/8" x 18"
2	A07030	8	Cable Clamp (Mail Clip) - 3/16"	13	BA03005005	12	3/4" X 3/8" Rod	24	SA03050039	2	Rafter Connector (Swivel) - 2 3/8"
3	A07040	2	Turnbuckle Jaw Eye - 1/2" x 6"	14	BA03089309	2	Cable Tab - Universal	25	SA03050043	4	Cross Brace Swivel Clamp - 2 3/8"
4	A07282	4	2 3/8" Plastic End Cap	15	BA04191002	7	1" x 8 Ft Small Loop Bolt	26	SA03148011	2	Upright Connector
5	A13134	18	Carriage Bolt - 3/8" x 4 1/2"	16	BA04191010	4	1" x 3 Ft Small Loop Bolt	27	SA03148020	1	Upright Connector (Double) - 2 3/8"
6	A13146	8	Bolt 3/8" x 1 1/2"	17	BA04313005	4	2" x 5" White Loadstrap Belt	28	U30B1230	1	TB Upright 3" x 9.5" Left 230"
7	A13156	4	Hex Bolt - 1/2" x 1 1/2"	18	CA03148098	2	Tube 2 3/8" - 13ga. x 98" long	29	U30BR230	1	TB Upright 3" x 9.5" Right 230"
8	A13157	1	Hex Bolt - 1/2" x 1 3/4"	19	CA04180210	1	1" L.D. Beltting 210" long	30	U30H0086	1	Hanger - 3 x 9.5 x 66"
9	A13158	2	Hex Bolt - 1/2" x 2"	20	CA07026148	2	Cable - 3/16" x 148"	31	UHE03179168	1	Header - (3x8.5) - 168"
10	A13227	24	Lock Nut - 3/8"	21	CA07026052	2	Cross Brace (Open) - 2 3/8" x 52"	32	W03029004	4	Mounting Brace
11	A13232	7	Lock Nut - 1/2"	22	LRA03136082	2	Cross Brace (Open) - 2 3/8" x 62"	33	W07008002	4	Box Winch - 1/2 Anchor (Double)
								34	W15100004	2	Cross Anchor Adapter for Upright Base



Governor 30 End Wall with Up Right Extended 30"  
 WhiteLine Shelters and Tents LTD.  
 8/24/2017  
 0198  
 Sheet 9 of 10  
**WINKLER**  
 244 West 25th Street  
 New York, NY 10001

Parts List				Parts List				Parts List			
ITEM	PART NUMBER	QTY	DESCRIPTION	ITEM	PART NUMBER	QTY	DESCRIPTION	ITEM	PART NUMBER	QTY	DESCRIPTION
1	A07003	12	Ratchet 1" H.D.	9	A13294	4	Anchor Bolt Kit - 1/2" x 5 1/2"	17	LRA03136080	2	Cross Brace (Open) - 2 3/8" x 60"
2	A07252	2	2 3/8" Plastic End Cap	10	A13295	4	Anchor Bolt Kit - 5/8" x 6"	18	LRA03136086	2	Cross Brace (Open) - 2 3/8" x 88"
3	A13008	2	#12 Self Tapping Screw	11	BA03146011	1	Clamp Connector - 2 3/8" x 8 1/4"	19	LRA03147120	2	Cross Brace - 2 3/8" x 120"
4	A13134	6	Carriage Bolt - 3/8" x 4 1/2"	12	BA04191002	12	1" x 6 Ft Small Loop Bolt	20	RA03136009	4	Cross Brace Inset - 2 3/8" x 18"
5	A13146	8	Bolt 3/8" x 1 1/2"	13	BA04313005	4	2" x 5 White Loadstrap Belt	21	SA03059043	2	Rafter Connector (Swivel) - 2 3/8"
6	A13168	2	Hex Bolt - 1/2" x 2"	14	CA03146240	1	Tube, 2 3/8" 13ga x 119" long	22	SA03059043	4	Cross Brace Swivel Clamp - 2 3/8"
7	A13227	14	Lock Nut - 3/8"	15	CA03146240	1	Tube, 2 3/8" 13ga x 240" long	23	SA03148011	2	Upright Connector
8	A13232	2	Lock Nut - 1/2"	16	CA04190210	1	1" L.D. Belling, 210' long	24	US08BN210	2	TB Upright, 3" x 9.5" Normal, 210"
								25	W07008001	4	Box Wrench 1/2" - 3/8" Anchor (Square)



Governor 30, End Wall, on Concrete  
 Whitehills Shelters and Tents LTD.  
 8/24/2017  
 0198  
 Sheet 10 of 10  
**WINKLER**  
 61 RUIRION ST  
 2000000000