

The information contained in this drawing is the confidential property of Platinum Energy Services ULC. No part thereof shall be reproduced or communicated to a third party without written authorization from Platinum Energy Services ULC.

GGEX-100
GAS TO GLYCOL PIPE ON PIPE EXCHANGER
8"x4"x10'-0"

V-600
GLYCOL CONTACTOR
24"OD x 28'-0" S/S
C/W INTEGRAL 3 PH. SEPARATOR
8 TRAY - MAWP 1440 PSI
RT1, PWHT, 0.125" C.A.
SN: 21890

FI-200
LP FILTER
CUNO 1B2
25 MICRON PARTICULATE
250 PSI MAWP

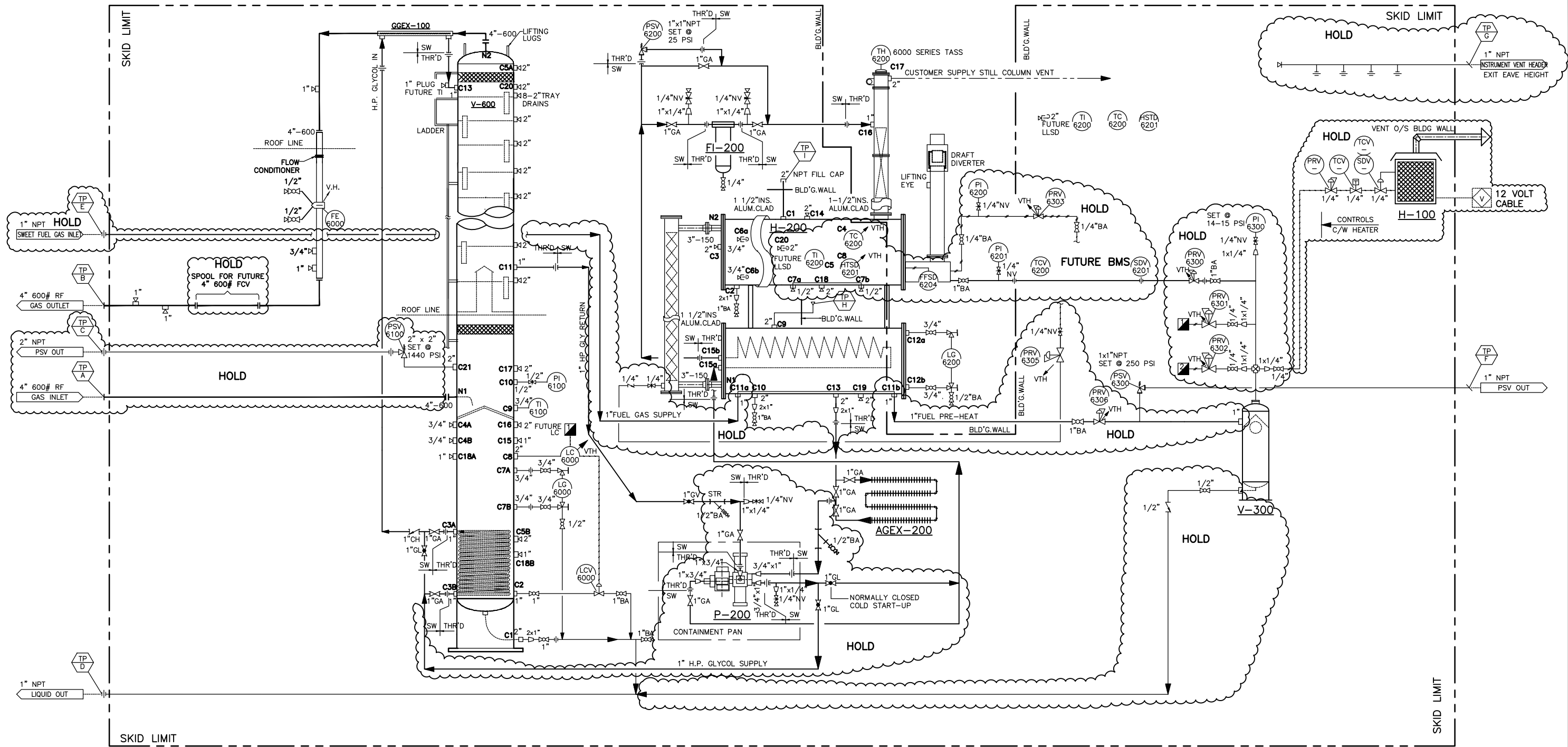
HOLD P-200
GLYCOL PUMP
"KIMRAY" 9015

H-200
REBOILER
250,000 BTU/HR BURNER
1 1/2" INS. & CLADDING
STILL COLUMN,
STRIPPING COLUMN c/w
CERAMIC SADDLES AND SURGE DRUM
SN: 30087

AGEX-200
AIR TO GLYCOL EXCHANGER
COOLING FIN TUBE
3/4"x4'-0" 4 PASS
1" OD x 5/8" FIN ATM
SOCKET WELD

HOLD V-300
F.G. SCRUBBER
6-5/8"x36" S/S
MAWP 285 PSI c/w
FLOAT SHUT-OFF
SWEET

HOLD H-100
CATALYTIC HEATER
CATADYNE CCI THERMAL 24"x24" 18,000 BTU/HR
SIDE MOUNT 12VDC START NATURAL GAS HEATER
C/W CABLES, CLAMPS, REGULATORS MERTEK TEMP.
CONTROL AND SAFETY SHUT-OFF,
25' CABLES AND VENT HOODS



NOTES:

REFERENCE DRAWINGS	REV	DESCRIPTION	BY	DATE	CHK'D	APP'D
	0	ISSUED FOR CONSTRUCTION	LL	17-08-24	BX	DG

ENGINEER'S STAMP	
DRAWN BY	EB 17-07-05
CHK'D BY	BX 17-07-05
APP'D BY	DG 17-07-05
CAD REF	30086-PID-01.dwg
SCALE	NTS

CLIENT	STOCK	
TITLE	24" OD X 28'-0" S/S 1440 PSI AB SOUR DEHY. PACKAGE PIPING & INSTRUMENTATION DIAGRAM	
JOB NO.	30086	DRAWING NO. 30086-PID-01
REV	0	

