

The information contained in this drawing is the confidential property of Platinum Energy Services ULC. No part thereof shall be reproduced or communicated to a third party without written authorization from Platinum Energy Services ULC.

**GGEX-100**  
GAS TO GLYCOL PIPE ON PIPE EXCHANGER  
8"x4"x10'-0"

**V-600**  
GLYCOL CONTACTOR  
24"OD x 28'-0" S/S  
C/W INTEGRAL 3 PH. SEPARATOR  
8 TRAY - MAWP 1440 PSI  
RT1, PWHT, 0.125" C.A.  
SN: 21890

**FI-200**  
LP FILTER  
CUNO 1B2  
25 MICRON PARTICULATE  
250 PSI MAWP

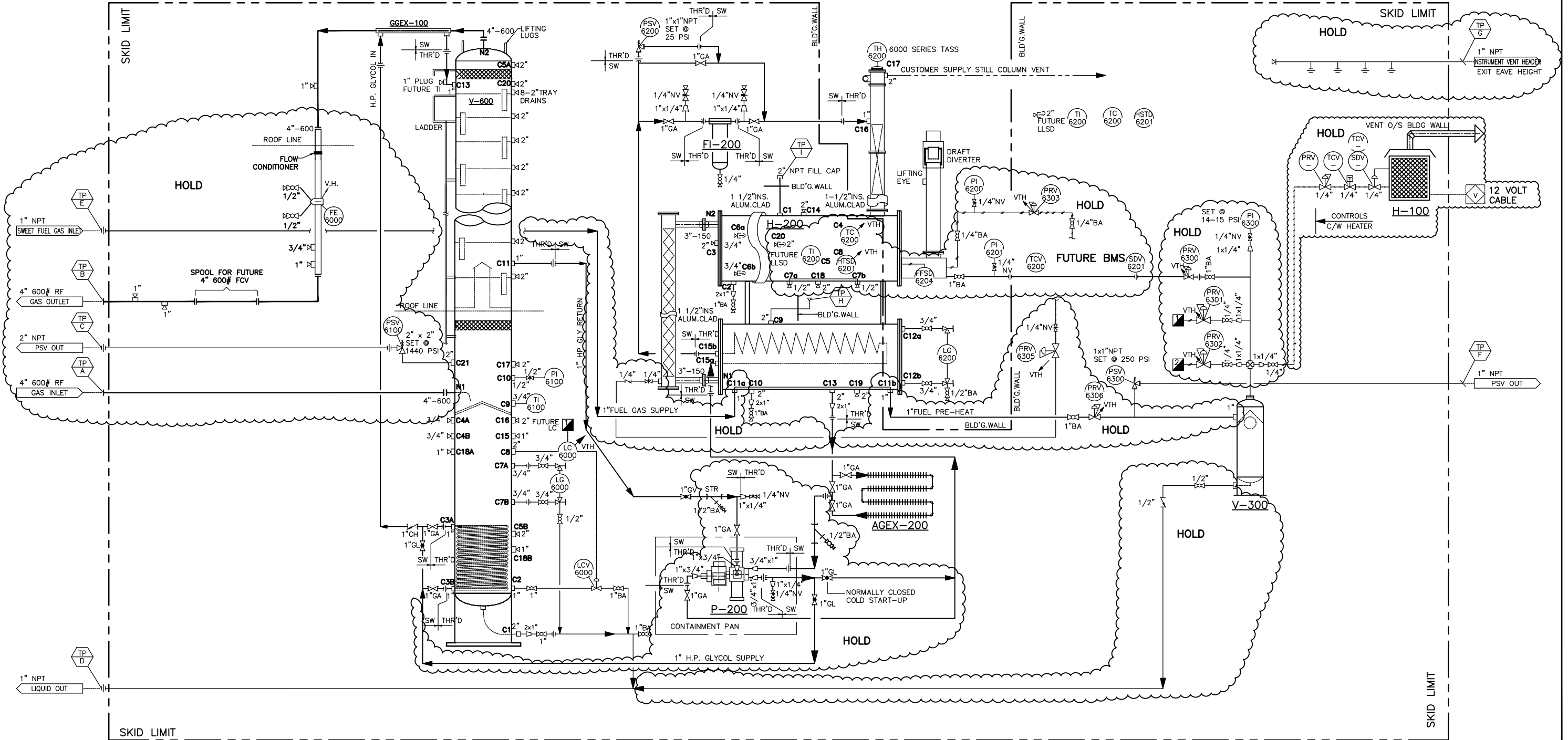
**HOLD P-200**  
GLYCOL PUMP  
"KIMRAY" 9015

**H-200**  
REBOILER  
250,000 BTU/HR BURNER  
1 1/2" INS. & CLADDING  
STILL COLUMN,  
STRIPPING COLUMN c/w  
CERAMIC SADDLES AND SURGE DRUM  
SN: 30087

**AGEX-200**  
AIR TO GLYCOL EXCHANGER  
COOLING FIN TUBE  
3/4"x4'-0" 4 PASS  
1" OD x 5/8" FIN ATM  
SOCKET WELD

**HOLD V-300**  
F.G. SCRUBBER  
6-5/8"x36" S/S  
MAWP. 285 PSI c/w  
FLOAT SHUT-OFF  
SWEET

**HOLD H-100**  
CATALYTIC HEATER  
CATADYNE CCI THERMAL 24"x24" 18,000 BTU/HR  
SIDE MOUNT 12VDC START NATURAL GAS HEATER  
C/W CABLES, CLAMPS, REGULATORS MERTEK TEMP.  
CONTROL AND SAFETY SHUT-OFF,  
25' CABLES AND VENT HOODS



NOTES:					ENGINEER'S STAMP				DRAWN BY EB 17-07-05		CLIENT STOCK		
									CHK'D BY BX 17-07-05				
									APP'D BY DG 17-07-05				
									CAD REF 30086-PID-01.dwg		SCALE NTS		
											TITLE <b>24" OD X 28'-0" S/S 1440 PSI AB SOUR DEHY. PACKAGE PIPING &amp; INSTRUMENTATION DIAGRAM</b>		
													JOB NO. 30086      DRAWING NO. 30086-PID-01      REV 0
REFERENCE DRAWINGS      REV      DESCRIPTION      BY      DATE      CHK'D      APP'D												CALGARY, ALBERTA	