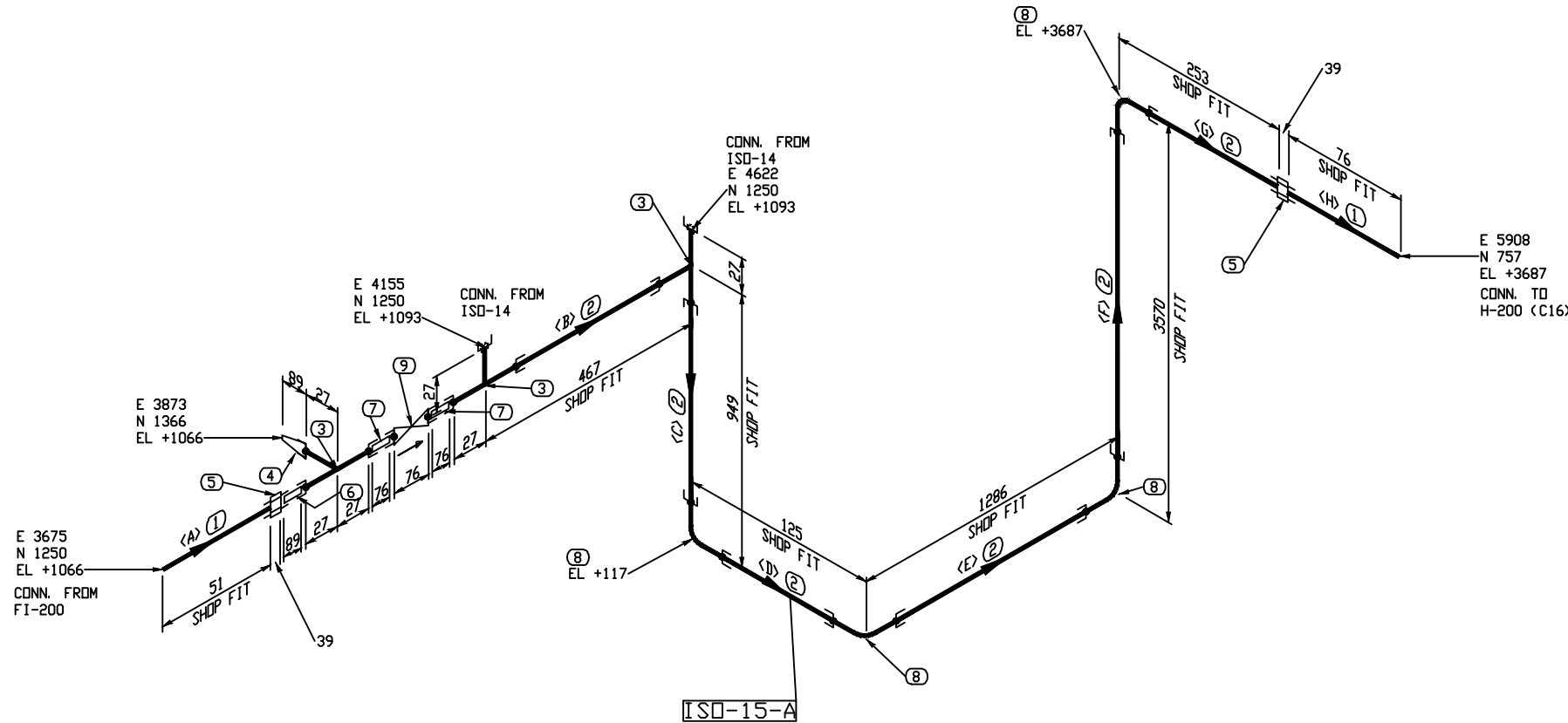
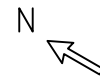


The information contained in this drawing is the confidential property of Platinum Energy Services ULC. No part thereof shall be reproduced or communicated to a third party without written authorization from Platinum Energy Services ULC.



BILL OF MATERIAL					
MARK	SIZE	DESCRIPTION	QTY	WEIGHT	
1	1	PIPE, S/80 SMLS, SA-106-B TBE	127 MM	0.5	
2	1	PIPE, S/80 SMLS, SA-106-B PBE	6353 MM	20.6	
3	1X1	TEE, STR. SW 3000LB, SA-105N	3	4.4	
4	1X1/2	SWAGE, CONC. S/160 x S/160, SA-234-WPB PLE-TSE	1	0.3	
5	1	UNION, SWXTHRD 3000LB, SA-105N	2	2.7	
6	1	NIPPLE, S/160 SMLS, SA-106-B PBE (80, 3000 MM LG)	1	1.7	
7	1	NIPPLE, S/160 SMLS, SA-106-B PBE (76, 0000 MM LG)	2	3.4	
8	1	90 ELL, SW 3000LB, SA-105N	4	4.1	
9	1	GATE VALVE, 800LB SW	1	3.8	
TOTAL FABRICATIDN WEIGHT				40.9	

CUT PIPE LENGTH

PIECE NUM	LENGTH (MM)	SIZE (INCH)
<A>	51	1
	413	1
<C>	895	1
<D>	71	1
<E>	1232	1
<F>	3516	1
<G>	226	1
<H>	76	1

THRD. & S.W. PIPING
 - SHOP RUN
 - SHOP CHECK
 - SHOP SUPPORT
 ON ASSEMBLY

NOTES:

- REGISTERED QUALITY CONTROL PROGRAM AQP 1084 FOR FACILITY AT 7550-114 AVE SE CALGARY AB.
REGISTERED QUALITY CONTROL PROGRAM AQP 1316 FOR FACILITY AT 502 MITCHELL STREET NORTH REDCLIFF AB.
- EXTERIOR & INTERIOR OF PIPE TO BE FREE OF WELD SLAG, SPATTER, GREASE, MOISTURE, ETC.
- ALL DIMENSIONS ARE IN MILLIMETERS, UNLESS OTHERWISE NOTED.
- ALL PIPING CUT LENGTHS ARE CALCULATED WITH A (3 mm) WELD GAP.
- FOR TACK WELDS USE PES-WPS-02
- DESIGN PRESSURE EQUALS MAWP.

LINE NUMBER		1" -NPT_300_GLYCOL ACCUMLATOR TO STILL COLUMN		SPEC	600#	FLUID SERVICE	NORMAL FLUID SERVICE	PIPE CODE	ASME B31.3 (LATEST EDITION & ADENDA)	WPS	PES-WPS-01/03		CLIENT	STOCK									
FITTING TO PIPE	SOL/TOL/WOL	TRANSITION WELD	PIG BAR WELD	RFSO FLANGE	SOCKET WELD			DES. PRESS.	9928 kPa (1440 PSI)	CA	1.6mm (0.0625")		PROJECT	24" OD X 28'-0" S/S 1440 PSI AB SOUR DEHY. PACKAGE PIPING ISOMETRIC									
								DES. TEMP.	38°C (100°F)	SANDBLAST	SSPC-SP3	FROM	FI-200 & ISO-14										
								MMDT	-29°C (-20°F)	PRIME	(1) COAT OF WARM GRAY DTM	TO	H-200 (C16)										
								TEST PRESS.	14892 kPa (2160 PSI)	PAINT	(1) COAT OF WARM GRAY DTM	JOB NO	30086										
								RADIOGRAPHY	10%	INSUL	NO	DWG. NO.	30086-ISO-15										
								PWHT	NO	HEAT TRACE	NO	SHT	1 OF 1										
								IMPACT TEST	NO			REV.	0										
REV.						REVISION DESCRIPTION			DATE			BY			CHK'D			APP'D			DESIGN DATA		