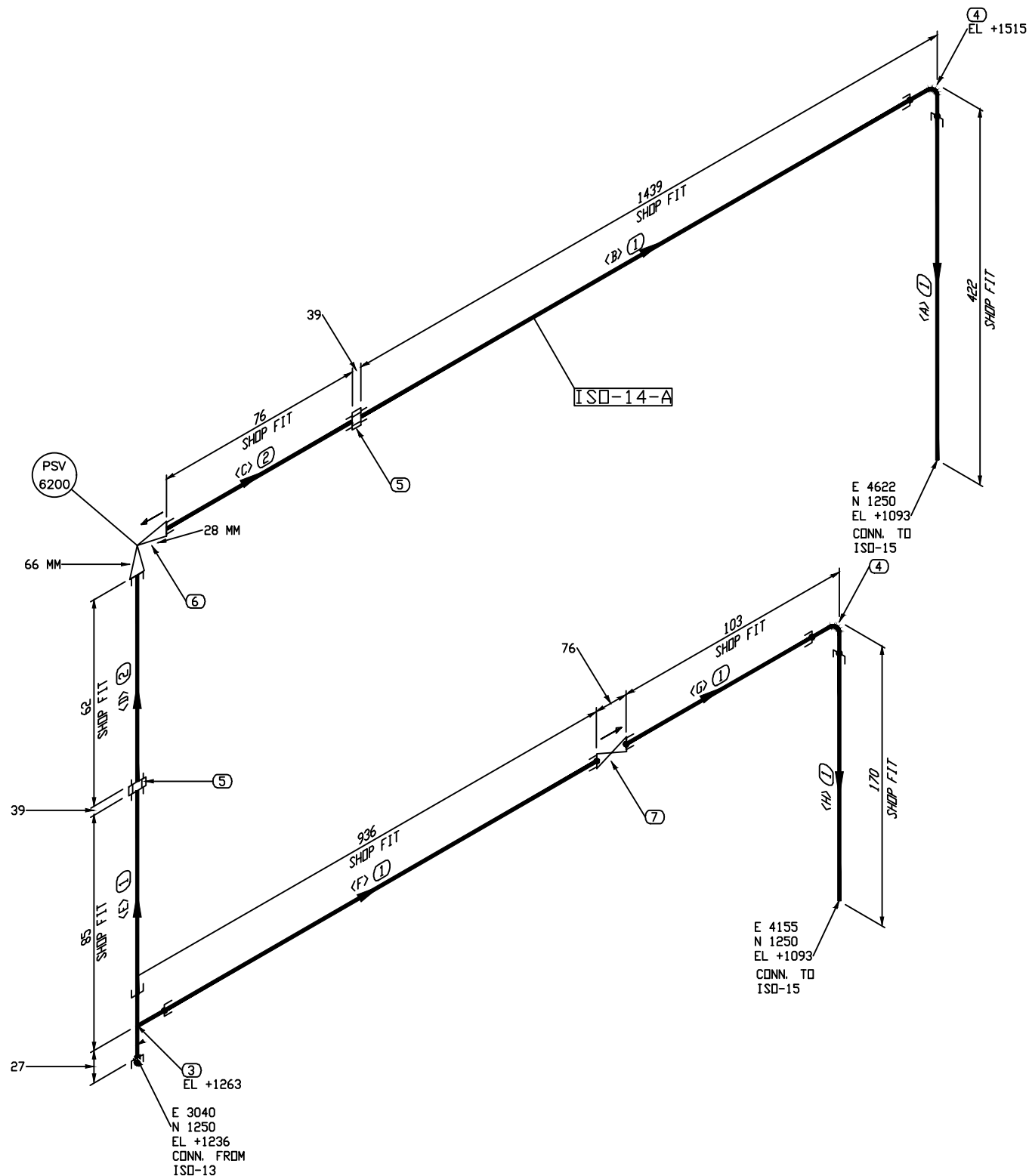
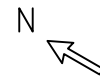


The information contained in this drawing is the confidential property of Platinum Energy Services ULC. No part thereof shall be reproduced or communicated to a third party without written authorization from Platinum Energy Services ULC.



| BILL OF MATERIAL | | | | | |
|--------------------------|------|--------------------------------|------|--------|------|
| MARK | SIZE | DESCRIPTION | QTY | WEIGHT | |
| 1 | 1 | PIPE, S/80 SMLS, SA-106-B PBE | 2993 | MM | 9.7 |
| 2 | 1 | PIPE, S/80 SMLS, SA-106-B TBE | 138 | MM | 0.5 |
| 3 | 1X1 | TEE, STR. SW 3000LB, SA-105N | 1 | | 1.5 |
| 4 | 1 | 90 ELL, SW 3000LB, SA-105N | 2 | | 2.1 |
| 5 | 1 | UNION, SWxTHRD 3000LB, SA-105N | 2 | | 2.7 |
| 6 | 1 | RELIEF VALVE, 800LB THRD | 1 | | 3.7 |
| 7 | 1 | GATE VALVE, 800LB SW | 1 | | 3.8 |
| TOTAL FABRICATION WEIGHT | | | | | 23.6 |

CUT PIPE LENGTH

| PIECE NUM | LENGTH (MM) | SIZE (INCH) |
|-----------|-------------|-------------|
| <A> | 395 | 1 |
| | 1412 | 1 |
| <C> | 76 | 1 |
| <D> | 62 | 1 |
| <E> | 58 | 1 |
| <F> | 909 | 1 |
| <G> | 76 | 1 |
| <H> | 143 | 1 |

THRD. & S.W. PIPING
 - SHOP RUN
 - SHOP CHECK
 - SHOP SUPPORT
 ON ASSEMBLY

NOTES:

- REGISTERED QUALITY CONTROL PROGRAM AQP 1084 FOR FACILITY AT 7550-114 AVE SE CALGARY AB.
REGISTERED QUALITY CONTROL PROGRAM AQP 1316 FOR FACILITY AT 502 MITCHELL STREET NORTH REDCLIFF AB.
- EXTERIOR & INTERIOR OF PIPE TO BE FREE OF WELD SLAG, SPATTER, GREASE, MOISTURE, ETC.
- ALL DIMENSIONS ARE IN MILLIMETERS, UNLESS OTHERWISE NOTED.
- ALL PIPING CUT LENGTHS ARE CALCULATED WITH A (3 mm) WELD GAP.
- FOR TACK WELDS USE PES-WPS-02
- DESIGN PRESSURE EQUALS MAWP.

| | | | | | | | | | | | | | | | | | | | | | | |
|-----------------|--|---|--|-----------------|------|---------------|----------------------|---------------|--------------------------------------|----------------------|---------------|----------------------------|-------------|--------------|------|----|-------------|----|------------|----|--|---------|
| LINE NUMBER | | 1" -NPT_300_GLYCOL ACCUMLATOR TO STILL COLUMN | | SPEC | 600# | FLUID SERVICE | NORMAL FLUID SERVICE | PIPE CODE | ASME B31.3 (LATEST EDITION & ADENDA) | WPS | PES-WPS-01/03 | | CLIENT | STOCK | | | | | | | | |
| DES. TEMP. | | 38°C (100°F) | | MMDT | | -29°C (-20°F) | | TEST PRESS. | | 14892 kPa (2160 PSI) | | | RADIOGRAPHY | 10% | PWHT | NO | IMPACT TEST | NO | HEAT TRACE | NO | | PROJECT |
| FITTING TO PIPE | | SOL/TOL/WOL | | TRANSITION WELD | | PIG BAR WELD | | RFSO FLANGE | | SOCKET WELD | | DRAWN BY LL 17-07-07 | FROM | ISO-13 | | | | | | | | |
| | | | | | | | | | | | | CHK'D BY BX 17-07-07 | TO | ISO-15 | | | | | | | | |
| 1) PES-WPS-03 | | 2) PES-WPS-01 | | 3) PES-WPS-21 | | 4) PES-WPS-01 | | 5) PES-WPS-01 | | 6) PES-WPS-01 | | APP'D BY DG 17-07-07 | JOB NO | 30086 | | | | | | | | |
| REV. | | REVISION DESCRIPTION | | DATE | | BY | | CHK'D | | APP'D | | DESIGN DATA | DWG. NO. | 30086-ISO-14 | | | | | | | | |
| 0 | | ISSUED FOR CONSTRUCTION | | 17-07-10 | | LL | | BX | | DG | | SHT | 1 OF 1 | | | | | | | | | |
| | | | | | | | | | | | | REV. | 0 | | | | | | | | | |