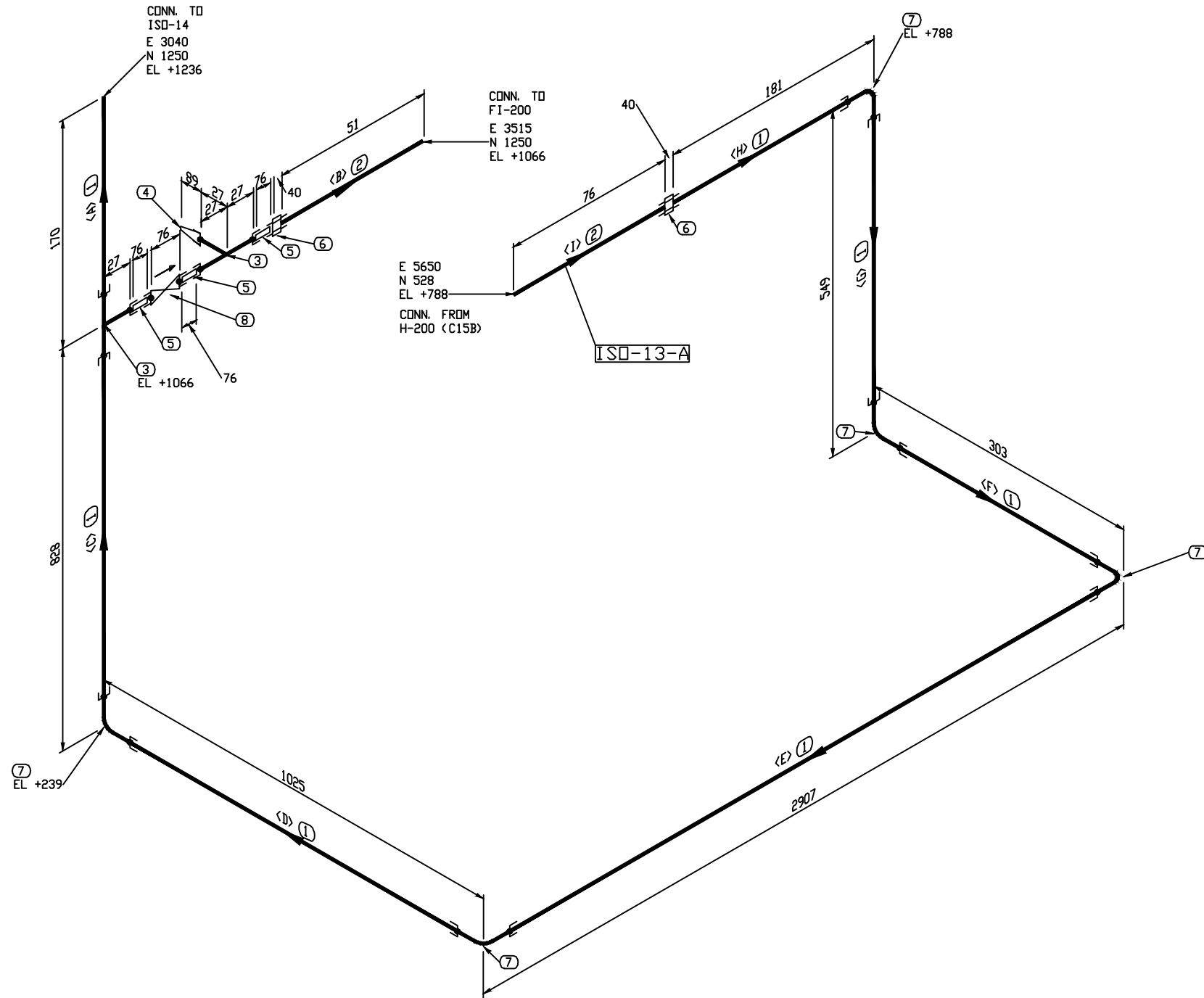
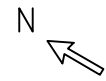


The information contained in this drawing is the confidential property of Platinum Energy Services ULC. No part thereof shall be reproduced or communicated to a third party without written authorization from Platinum Energy Services ULC.



BILL OF MATERIAL					
MARK	SIZE	DESCRIPTION	QTY	WEIGHT	
1	1	PIPE, S/80 SMLS, SA-106-B PBE	5638 MM	18.3	
2	1	PIPE, S/80 SMLS, SA-106-B TBE	127 MM	0.5	
3	1X1	TEE, STR. SW 3000LB, SA-105N	2	2.9	
4	1X1/2	SWAGE, CONC. S/160 x S/160, SA-234-WPB PLE-TSE	1	0.3	
5	1	NIPPLE, S/160 SMLS, SA-106-B PBE (76.0000 MM LG)	3	5.0	
6	1	UNION, SWxTHRD 3000LB, SA-105N	2	2.7	
7	1	90 ELL, SW 3000LB, SA-105N	5	5.1	
8	1	GATE VALVE, 800LB SW	1	3.8	
TOTAL FABRICATION WEIGHT				38.2	

CUT PIPE LENGTH

PIECE NUM	LENGTH (MM)	SIZE (INCH)
<A>	143	1
	51	1
<C>	773	1
<D>	971	1
<E>	2853	1
<F>	249	1
<G>	495	1
<H>	154	1
<I>	76	1

THRD. & S.W. PIPING
 - SHOP RUN
 - SHOP CHECK
 - SHOP SUPPORT ON ASSEMBLY

NOTES:

- REGISTERED QUALITY CONTROL PROGRAM AQP 1084 FOR FACILITY AT 7550-114 AVE SE CALGARY AB.
REGISTERED QUALITY CONTROL PROGRAM AQP 1316 FOR FACILITY AT 502 MITCHELL STREET NORTH REDCLIFF AB.
- EXTERIOR & INTERIOR OF PIPE TO BE FREE OF WELD SLAG, SPATTER, GREASE, MOISTURE, ETC.
- ALL DIMENSIONS ARE IN MILLIMETERS, UNLESS OTHERWISE NOTED.
- ALL PIPING CUT LENGTHS ARE CALCULATED WITH A (3 mm) WELD GAP.
- FOR TACK WELDS USE PES-WPS-02
- DESIGN PRESSURE EQUALS MAWP.

LINE NUMBER 1" -NPT_300_GLYCOL ACCUMULATOR TO STILL COLUMN			SPEC 600#	FLUID SERVICE NORMAL FLUID SERVICE	PIPE CODE ASME B31.3 (LATEST EDITION & ADENDA)	WPS PES-WPS-01/03	 CALGARY, ALBERTA	CLIENT STOCK
					DES. PRESS. 9928 kPa (1440 PSI)	CA 1.6mm (0.0625")		PROJECT 24" OD X 28'-0" S/S 1440 PSI AB SOUR DEHY. PACKAGE PIPING ISOMETRIC
					DES. TEMP. 38°C (100°F)	SANDBLAST SSPC-SP3		
					MMDT -29°C (-20°F)	PRIME (1) COAT OF WARM GRAY DTM		
					TEST PRESS. 14892 kPa (2160 PSI)	PAINT (1) COAT OF WARM GRAY DTM		
					RADIOGRAPHY 10%	INSUL NO	DRAWN BY LL 17-07-07 CHK'D BY BX 17-07-07 APP'D BY DG 17-07-07	FROM H-200 (C15B) TO FI-200 & ISO-14
					PWHT NO	IMPACT TEST NO	HEAT TRACE NO	JOB NO 30086 DWG. NO. 30086-ISO-13 SHT 1 OF 1 REV. 0
FITTING TO PIPE 			SOL/TOL/WOL 		TRANSITION WELD 		PIG BAR WELD 	
RFSO FLANGE 		SOCKET WELD 						
1) PES-WPS-03 2) PES-WPS-01 3) PES-WPS-21 4) PES-WPS-01 5) PES-WPS-01 6) PES-WPS-01			0 ISSUED FOR CONSTRUCTION REV. REVISION DESCRIPTION DATE BY CHK'D APP'D		17-07-10 LL BX DG		DESIGN DATA	