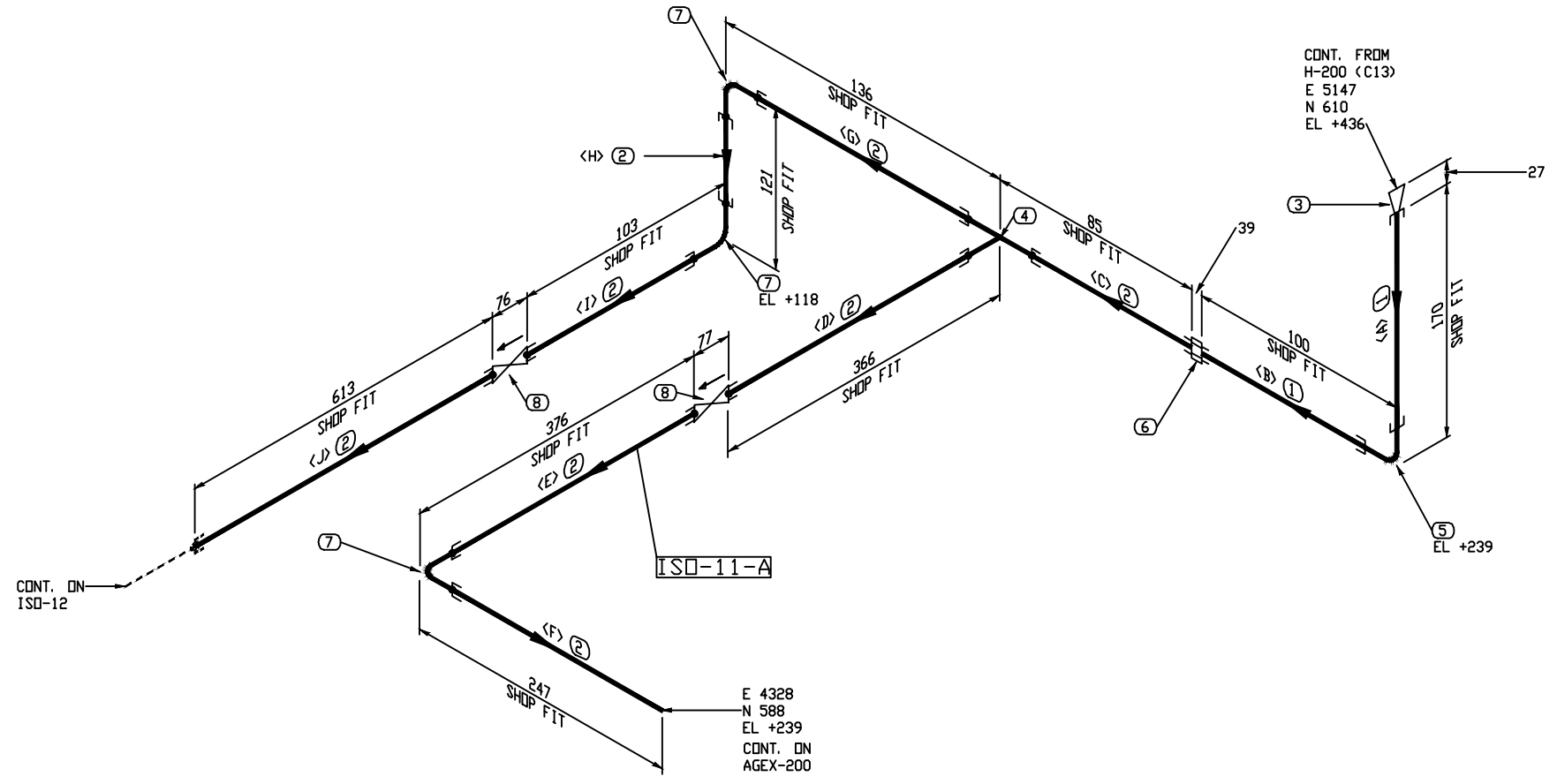


BILL OF MATERIAL					
MARK	SIZE	DESCRIPTION	QTY	WEIGHT	
1	1	PIPE, S/80 SMLS, SA-106-B TBE	202 MM	0.7	
2	1	PIPE, S/80 SMLS, SA-106-B PBE	1804 MM	5.9	
3	2X1	BUSHING, RED. THRD 3000LB, SA-105N	1	1.0	
4	1X1	TEE, STR. SW 3000LB, SA-105N	1	1.5	
5	1	90 ELL, THRD 3000LB, SA-105N	1	1.7	
6	1	UNION, SWxTHRD 3000LB, SA-105N	1	1.4	
7	1	90 ELL, SW 3000LB, SA-105N	3	3.1	
8	1	GATE VALVE, 800LB SW	2	7.6	
				TOTAL FABRICATION WEIGHT	22.4

CUT PIPE LENGTH

PIECE NUM	LENGTH (MM)	SIZE (INCH)
<A>	136	1
	66	1
<C>	58	1
<D>	339	1
<E>	349	1
<F>	220	1
<G>	82	1
<H>	67	1
<I>	76	1
<J>	613	1



THRD. & S.W. PIPING
 - SHOP RUN
 - SHOP CHECK
 - SHOP SUPPORT
 ON ASSEMBLY

NOTES:

- REGISTERED QUALITY CONTROL PROGRAM AQP 1084 FOR FACILITY AT 7550-114 AVE SE CALGARY AB.
REGISTERED QUALITY CONTROL PROGRAM AQP 1316 FOR FACILITY AT 502 MITCHELL STREET NORTH REDCLIFF AB.
- EXTERIOR & INTERIOR OF PIPE TO BE FREE OF WELD SLAG, SPATTER, GREASE, MOISTURE, ETC.
- ALL DIMENSIONS ARE IN MILLIMETERS, UNLESS OTHERWISE NOTED.
- ALL PIPING CUT LENGTHS ARE CALCULATED WITH A (3 mm) WELD GAP.
- FOR TACK WELDS USE PES-WPS-02
- DESIGN PRESSURE EQUALS MAWP.

The information contained in this drawing is the confidential property of Platinum Energy Services ULC. No part thereof shall be reproduced or communicated to a third party without written authorization from Platinum Energy Services ULC.

LINE NUMBER	1" -NPT_300_GLYCOL REBOILER TO PUMP		SPEC	600#	FLUID SERVICE	NORMAL FLUID SERVICE	PIPE CODE	ASME B31.3 (LATEST EDITION & ADENDA)	WPS	PES-WPS-02/04		CLIENT	STOCK					
FITTING TO PIPE	SOL/TOL/WOL	TRANSITION WELD	PIG BAR WELD	RFSO FLANGE	SOCKET WELD	DES. PRESS.	9928 kPa (1440 PSI)	CA	3.2mm (0.125")	SANDBLAST		SSPC-SP3	PROJECT	24" OD X 28'-0" S/S 1440 PSI AB SOUR DEHY. PACKAGE PIPING ISOMETRIC				
DES. TEMP.	38°C (100°F)	MMDT	-29°C (-20°F)	TEST PRESS.	14892 kPa (2160 PSI)	RADIOGRAPHY	10%	PWHT	NO	IMPACT TEST	NO	HEAT TRACE	NO					
REV.	0	ISSUED FOR CONSTRUCTION	DATE	17-07-10	BY	LL	CHK'D	BX	APP'D	DG	DESIGN DATA	DRAWN BY	LL	17-07-07				
												CHK'D BY	BX	17-07-07				
												APP'D BY	DG	17-07-07				
											FROM	H-200 (C13)						
											TO	AGEX-200 & ISO-12						
											JOB NO	30086	DWG. NO.	30086-ISO-11	SHT	1 OF 1	REV.	0