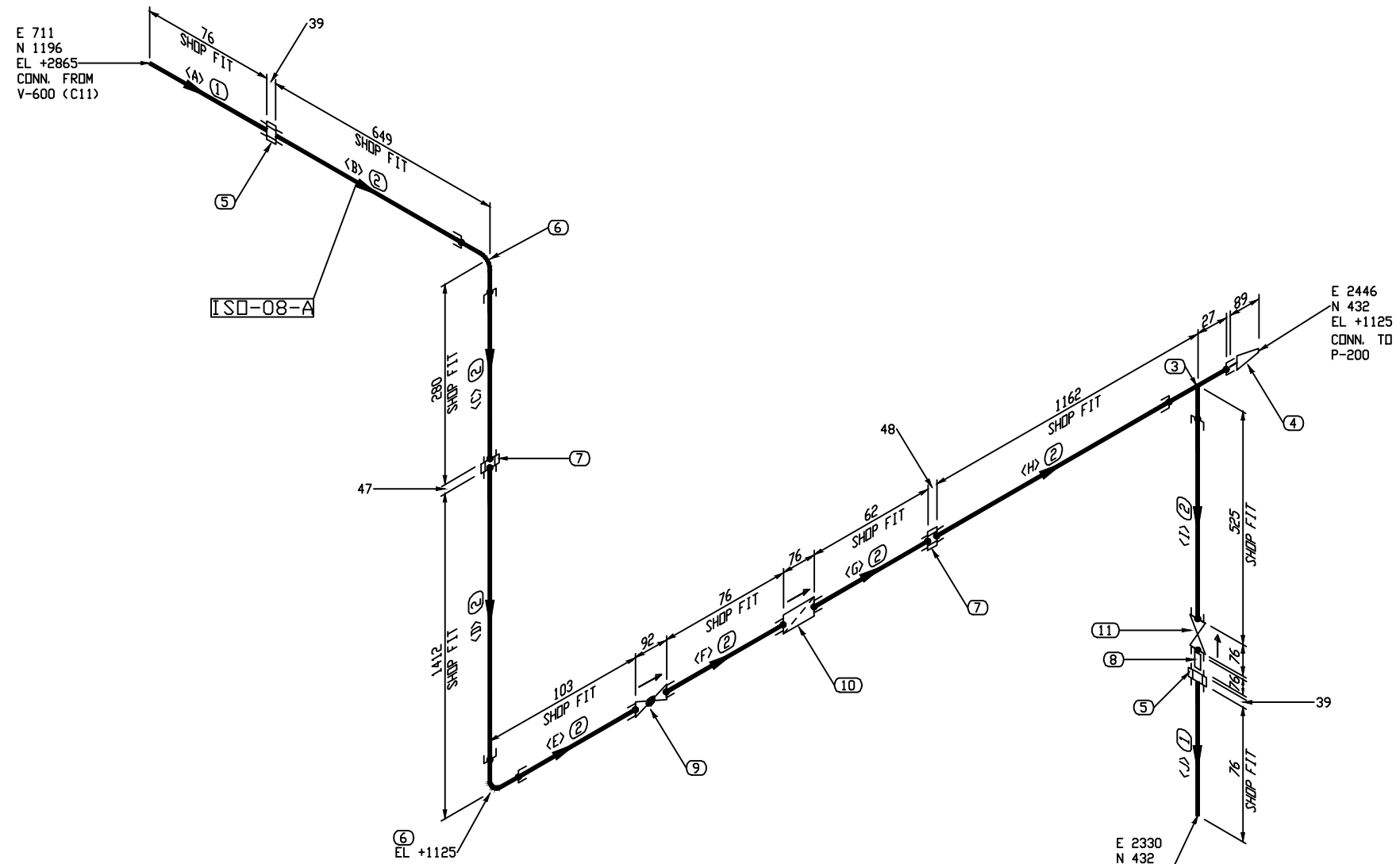
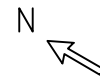


The information contained in this drawing is the confidential property of Platinum Energy Services ULC. No part thereof shall be reproduced or communicated to a third party without written authorization from Platinum Energy Services ULC.



BILL OF MATERIAL				
MARK	SIZE	DESCRIPTION	QTY	WEIGHT
1	1	PIPE, S/80 SMLS, SA-106-B TBE	152 MM	0.5
2	1	PIPE, S/80 SMLS, SA-106-B PBE	4108 MM	13.3
3	1X1	TEE, STR. SW 3000LB, SA-105N	1	1.5
4	1X1/2	SWAGE, CONC. S/160 x S/160, SA-234-WPB PLE-TSE	1	0.3
5	1	UNION, SWXTHRD 3000LB, SA-105N	2	2.7
6	1	90 ELL, SW 3000LB, SA-105N	2	2.1
7	1	UNION, SW 3000LB, SA-105N	2	2.7
8	1	NIPPLE, S/160 SMLS, SA-106-B PBE (76.0000 MM LG)	1	1.7
9	1	GLOBE VALVE, 800LB SW	1	4.0
10	1	Y-STRAINER, 800LB SW	1	2.4
11	1	GATE VALVE, 800LB SW	1	3.8
TOTAL FABRICATION WEIGHT				34.4

CUT PIPE LENGTH

PIECE NUM	LENGTH (MM)	SIZE (INCH)
<A>	76	1
	622	1
<C>	253	1
<D>	1385	1
<E>	76	1
<F>	76	1
<G>	62	1
<H>	1135	1
<I>	499	1
<J>	76	1

THRD. & S.W. PIPING
 - SHOP RUN
 - SHOP CHECK
 - SHOP SUPPORT
 ON ASSEMBLY

NOTES:

- REGISTERED QUALITY CONTROL PROGRAM AQP 1084 FOR FACILITY AT 7550-114 AVE SE CALGARY AB.
REGISTERED QUALITY CONTROL PROGRAM AQP 1316 FOR FACILITY AT 502 MITCHELL STREET NORTH REDCLIFF AB.
- EXTERIOR & INTERIOR OF PIPE TO BE FREE OF WELD SLAG, SPATTER, GREASE, MOISTURE, ETC.
- ALL DIMENSIONS ARE IN MILLIMETERS, UNLESS OTHERWISE NOTED.
- ALL PIPING CUT LENGTHS ARE CALCULATED WITH A (3 mm) WELD GAP.
- FOR TACK WELDS USE PES-WPS-02
- DESIGN PRESSURE EQUALS MAWP.

LINE NUMBER 1" -NPT_300_H. P. GLYCOL RETURN		SPEC 600#	FLUID SERVICE NORMAL FLUID SERVICE	PIPE CODE ASME B31.3 (LATEST EDITION & ADENDA)	WPS PES-WPS-01/03		CLIENT STOCK																										
DES. PRESS. 9928 kPa (1440 PSI)	DES. TEMP. 38°C (100°F)	MMDT -29°C (-20°F)	TEST PRESS. 14892 kPa (2160 PSI)	RADIOGRAPHY 10%	PWHT NO		IMPACT TEST NO	HEAT TRACE NO																									
<table border="1"> <tr> <th>REV.</th> <th>REVISION DESCRIPTION</th> <th>DATE</th> <th>BY</th> <th>CHK'D</th> <th>APP'D</th> </tr> <tr> <td>0</td> <td>ISSUED FOR CONSTRUCTION</td> <td>17-07-10</td> <td>LL</td> <td>BX</td> <td>DG</td> </tr> </table>				REV.	REVISION DESCRIPTION	DATE	BY	CHK'D	APP'D	0	ISSUED FOR CONSTRUCTION	17-07-10	LL	BX	DG	<table border="1"> <tr> <th>DESIGN DATA</th> <th>DESIGN DATA</th> </tr> <tr> <td>DRAWN BY LL</td> <td>17-07-07</td> </tr> <tr> <td>CHK'D BY BX</td> <td>17-07-07</td> </tr> <tr> <td>APP'D BY DG</td> <td>17-07-07</td> </tr> </table>		DESIGN DATA	DESIGN DATA	DRAWN BY LL	17-07-07	CHK'D BY BX	17-07-07	APP'D BY DG	17-07-07	<table border="1"> <tr> <td>PROJECT 24" OD X 28'-0" S/S 1440 PSI AB SOUR DEHY. PACKAGE PIPING ISOMETRIC</td> </tr> <tr> <td>FROM V-600 (C11)</td> </tr> <tr> <td>TO P-200</td> </tr> <tr> <td>JOB NO 30086</td> </tr> <tr> <td>DWG. NO. 30086-ISO-08</td> </tr> <tr> <td>SHT 1 OF 1</td> </tr> <tr> <td>REV. 0</td> </tr> </table>	PROJECT 24" OD X 28'-0" S/S 1440 PSI AB SOUR DEHY. PACKAGE PIPING ISOMETRIC	FROM V-600 (C11)	TO P-200	JOB NO 30086	DWG. NO. 30086-ISO-08	SHT 1 OF 1	REV. 0
REV.	REVISION DESCRIPTION	DATE	BY	CHK'D	APP'D																												
0	ISSUED FOR CONSTRUCTION	17-07-10	LL	BX	DG																												
DESIGN DATA	DESIGN DATA																																
DRAWN BY LL	17-07-07																																
CHK'D BY BX	17-07-07																																
APP'D BY DG	17-07-07																																
PROJECT 24" OD X 28'-0" S/S 1440 PSI AB SOUR DEHY. PACKAGE PIPING ISOMETRIC																																	
FROM V-600 (C11)																																	
TO P-200																																	
JOB NO 30086																																	
DWG. NO. 30086-ISO-08																																	
SHT 1 OF 1																																	
REV. 0																																	