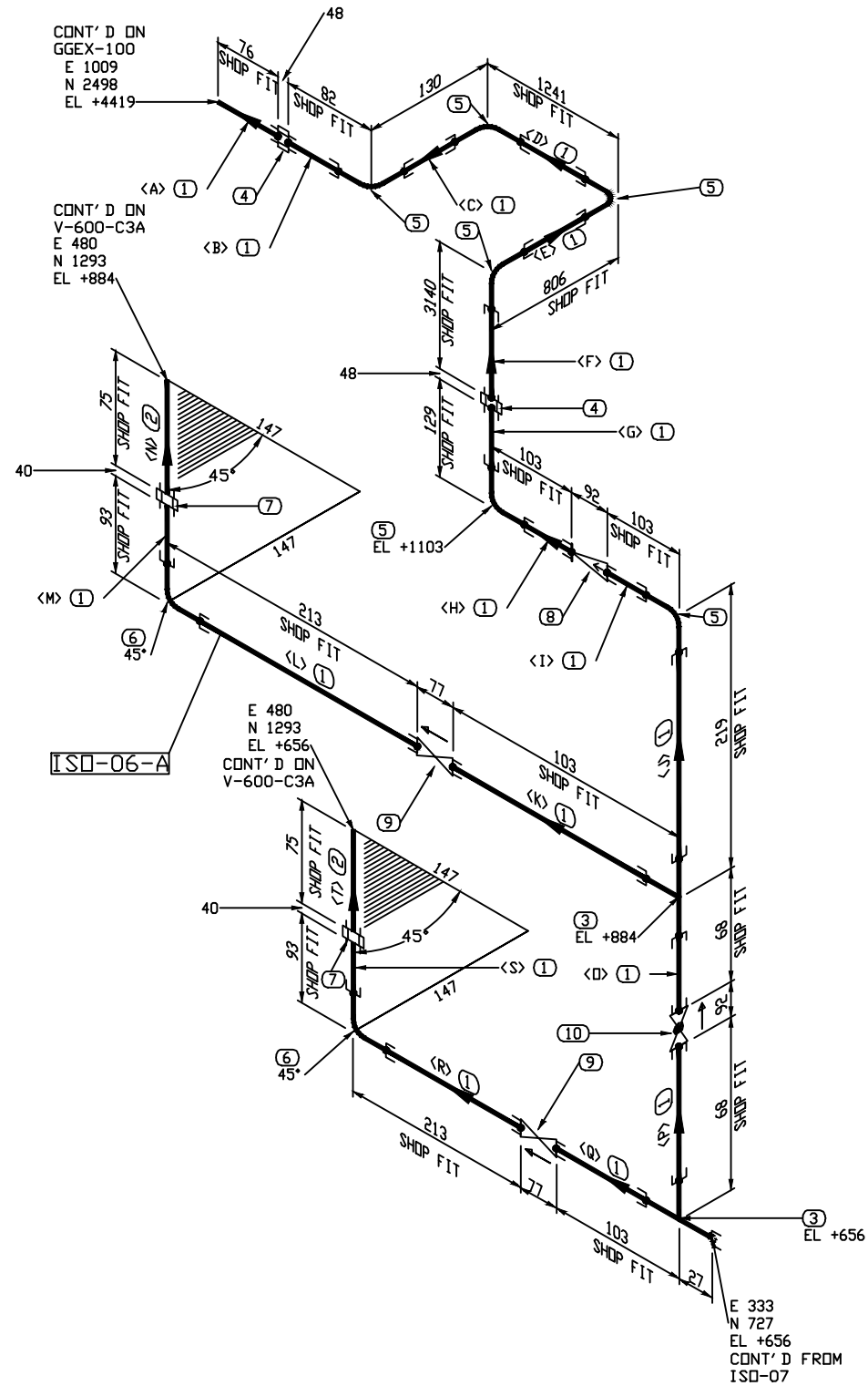
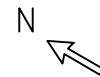


The information contained in this drawing is the confidential property of Platinum Energy Services U.L.C. No part thereof shall be reproduced or communicated to a third party without written authorization from Platinum Energy Services U.L.C.



BILL OF MATERIAL				
MARK	SIZE	DESCRIPTION	QTY	WEIGHT
1	1	PIPE, S/80 SMLS, SA-106-B PBE	6453 MM	20.9
2	1	PIPE, S/80 SMLS, SA-106-B TBE	150 MM	0.5
3	1X1	TEE, STR. SW 3000LB, SA-105N	2	2.9
4	1	UNION, SW 3000LB, SA-105N	2	2.7
5	1	90 ELL, SW 3000LB, SA-105N	6	6.2
6	1	45 ELL, SW 3000LB, SA-105N	2	1.9
7	1	UNION, SWxTHRD 3000LB, SA-105N	2	2.7
8	1	CHECK VALVE, 800LB SW	1	2.8
9	1	GATE VALVE, 800LB SW	2	7.6
10	1	GLOBE VALVE, 800LB SW	1	4.0
TOTAL FABRICATION WEIGHT				51.6

CUT PIPE LENGTH		
PIECE NUM	LENGTH (MM)	SIZE (INCH)
<A>	76	1
<B>	55	1
<C>	76	1
<D>	1186	1
<E>	752	1
<F>	3113	1
<G>	102	1
<H>	76	1
<I>	76	1
<J>	165	1
<K>	76	1
<L>	195	1
<M>	76	1
<N>	75	1
<O>	41	1
<P>	41	1
<Q>	76	1
<R>	195	1
<S>	76	1
<T>	75	1

THRD. & S.W. PIPING  
 - SHOP RUN  
 - SHOP CHECK  
 - SHOP SUPPORT  
 ON ASSEMBLY

**NOTES:**

- REGISTERED QUALITY CONTROL PROGRAM AQP 1084 FOR FACILITY AT 7550-114 AVE SE CALGARY AB.  
REGISTERED QUALITY CONTROL PROGRAM AQP 1316 FOR FACILITY AT 502 MITCHELL STREET NORTH REDCLIFF AB.
- EXTERIOR & INTERIOR OF PIPE TO BE FREE OF WELD SLAG, SPATTER, GREASE, MOISTURE, ETC.
- ALL DIMENSIONS ARE IN MILLIMETERS, UNLESS OTHERWISE NOTED.
- ALL PIPING CUT LENGTHS ARE CALCULATED WITH A (3 mm) WELD GAP.
- FOR TACK WELDS USE PES-WPS-02
- DESIGN PRESSURE EQUALS MAWP.

LINE NUMBER 1" -NPT_300_H.P. GLYCOL IN		SPEC 600#	FLUID SERVICE NORMAL FLUID SERVICE	PIPE CODE ASME B31.3 (LATEST EDITION & AEND A)	WPS PES-WPS-01/03		CLIENT STOCK
FITTING TO PIPE SOL/TOL/WOL TRANSITION WELD PIG BAR WELD RFSO FLANGE SOCKET WELD				DES. PRESS. 9928 kPa (1440 PSI)	CA 1.6mm (0.0625")		PROJECT 24" OD X 28'-0" S/S 1440 PSI AB SOUR DEHY. PACKAGE PIPING ISOMETRIC
				DES. TEMP. 38°C (100°F)	SANDBLAST SSPC-SP3	FROM ISO-07	
				MMDT -29°C (-20°F)	PRIME (1) COAT OF WARM GRAY DTM	TO V-600 (C3A/C3B) & GGEX-100	
				TEST PRESS. 14892 kPa (2160 PSI)	PAINT (1) COAT OF WARM GRAY DTM	JOB NO 30086	
				RADIOGRAPHY 10%	INSUL NO	DWG. NO. 30086-ISO-06	
				PWHT NO	HEAT TRACE NO	SHT 1 OF 1	
		REV. 0	ISSUED FOR CONSTRUCTION	DATE 17-07-07	LL BX DG	REV. 0	
			REVISION DESCRIPTION	DATE	CHK'D APP'D		
					DESIGN DATA		
					APP'D BY DG		