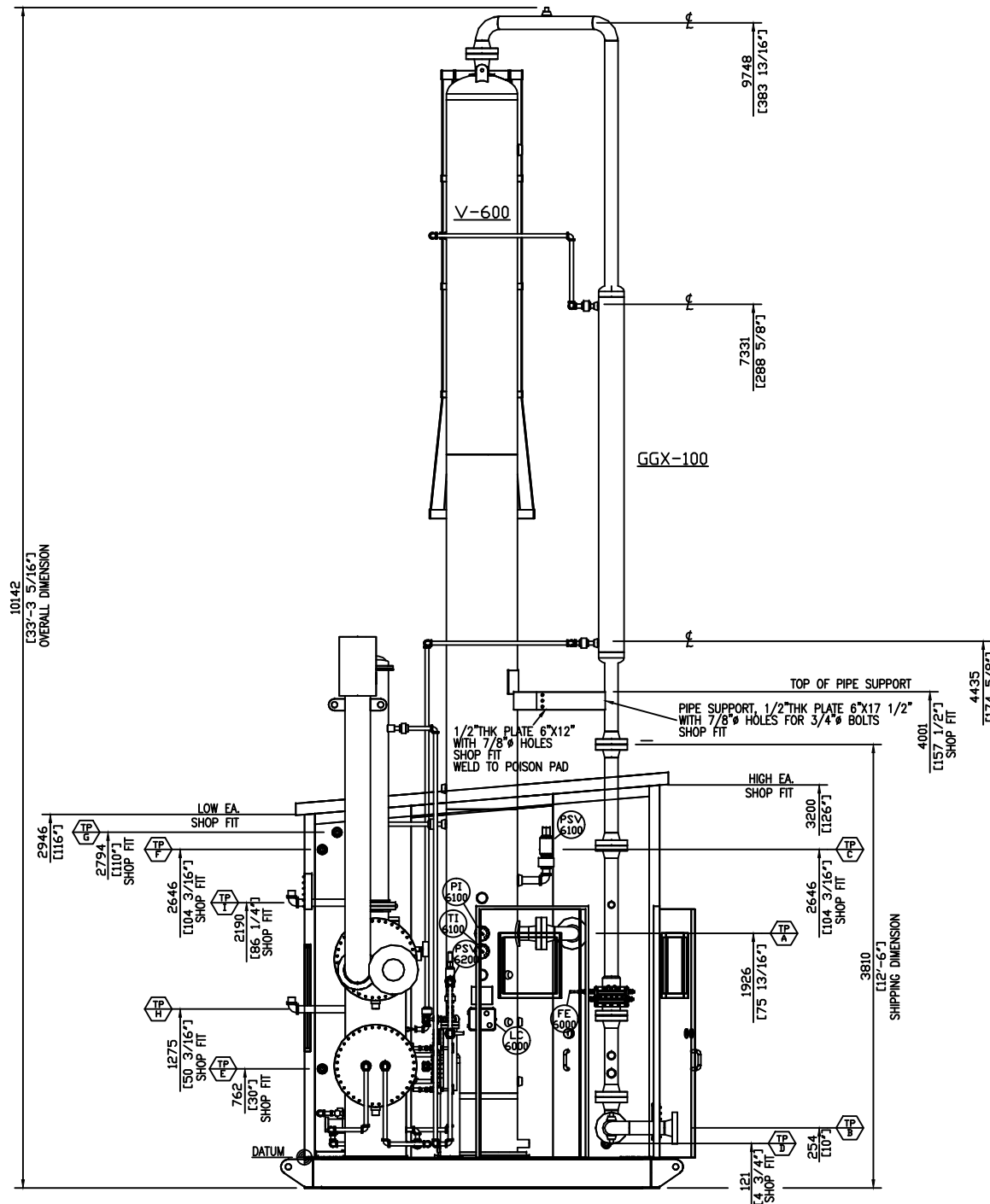
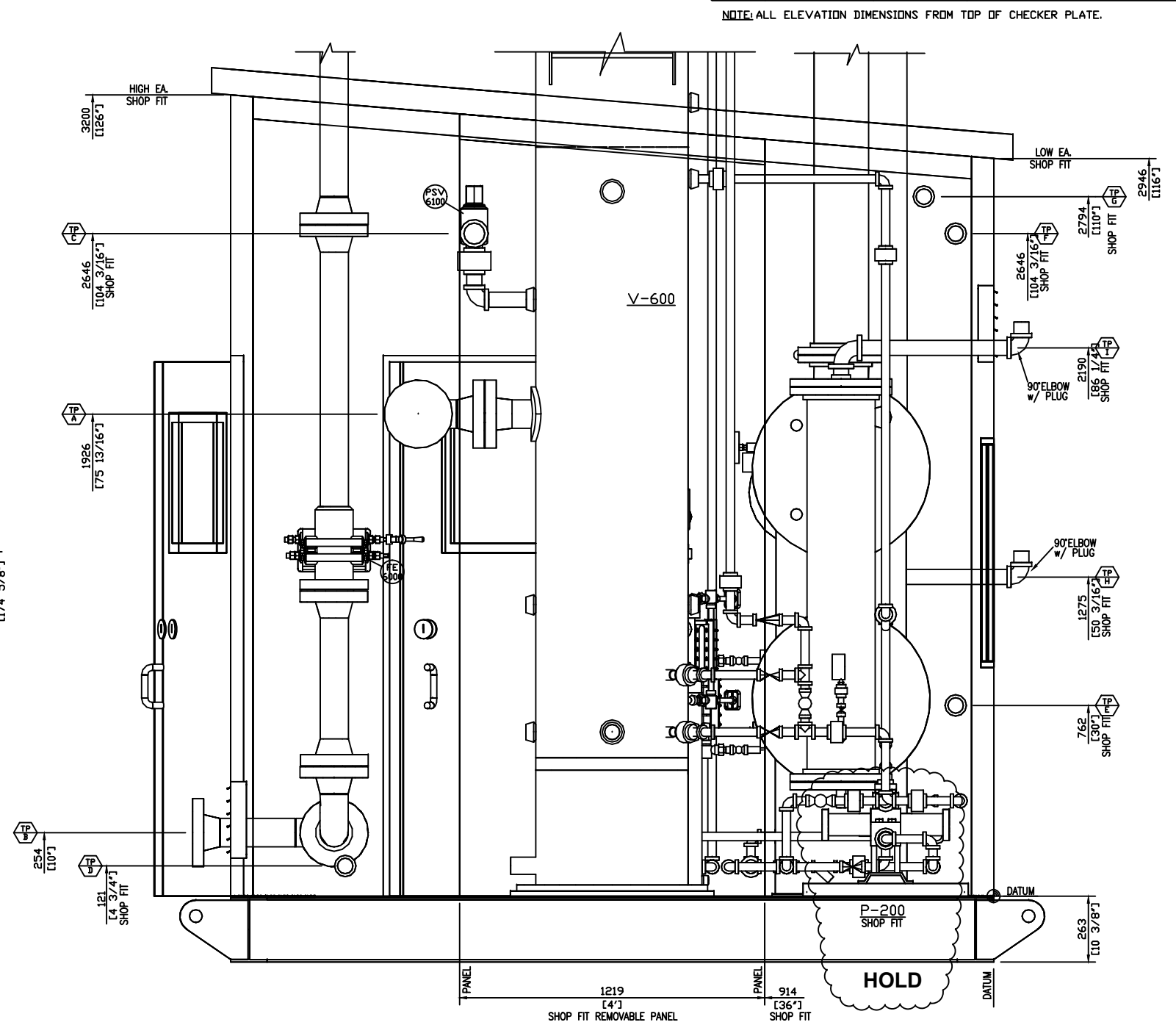


TIE-IN SCHEDULE			
MARK	SIZE / RATING	ELEVATION	DESCRIPTION
TP-A	4" 600# RF	75 13/16" [1926]	GAS INLET
TP-B	4" 600# RF	10" [254]	GAS OUTLET
TP-C	2" NPT	104 3/16" [2646]	PSV OUT
TP-D	1" NPT	4 3/4" [121]	LIQUID OUT
TP-E	1" NPT	30" [762]	SWEET FUEL GAS INLET
TP-F	1" NPT	104 3/16" [2646]	SCRUBBER PSV OUT
TP-G	1" NPT	110" [2794]	INSTRUMENT VENT HEADER
TP-H	2" NPT	50 3/16" [1275]	SURGE TANK FILL
TP-I	2" NPT	86 1/4" [2190]	REBOILER FILL

NOTE: ALL ELEVATION DIMENSIONS FROM TOP OF CHECKER PLATE.



VIEW 'D-D'



VIEW 'C-C'

NOTES:

GA-06	GENERAL ARRANGEMENT - NW ISOMETRIC VIEW					
GA-04	GENERAL ARRANGEMENT - VIEW 'B-B'					
GA-03	GENERAL ARRANGEMENT - VIEW 'A-A'					
GA-02	GENERAL ARRANGEMENT - PLAN VIEW					
GA-01	GENERAL ARRANGEMENT - SW ISOMETRIC VIEW					
SKD-01	STRUCTURAL STEEL	0	ISSUED FOR CONSTRUCTION	CL	17-08-24	BX DG
PID-01	PIPING & INSTRUMENTATION DIAGRAM	A	ISSUED FOR EQUIPMENT LOCATION	CL	15-10-20	BX DG

REFERENCE DRAWINGS	REV	DESCRIPTION	BY	DATE	CHK'D	APP'D

ENGINEER'S STAMP

DRWN BY	CL	15-10-20
CHK'D BY	BX	15-10-20
APP'D BY	DG	15-10-20
CAD REF	30086-GA-05.DWG	SCALE AS SHOWN

CLIENT	STOCK
TITLE	24" OD X 28'-0" 1440 PSI AB SOUR DEHY. PACKAGE GENERAL ARRANGEMENT - VIEW 'C-C' & 'D-D'
JOB NO.	30086
DRAWING NO.	30086-GA-05
REV	0

The information contained in this drawing is the confidential property of Platinum Energy Services ULC. No part thereof shall be reproduced or communicated to a third party without written authorization from Platinum Energy Services ULC.