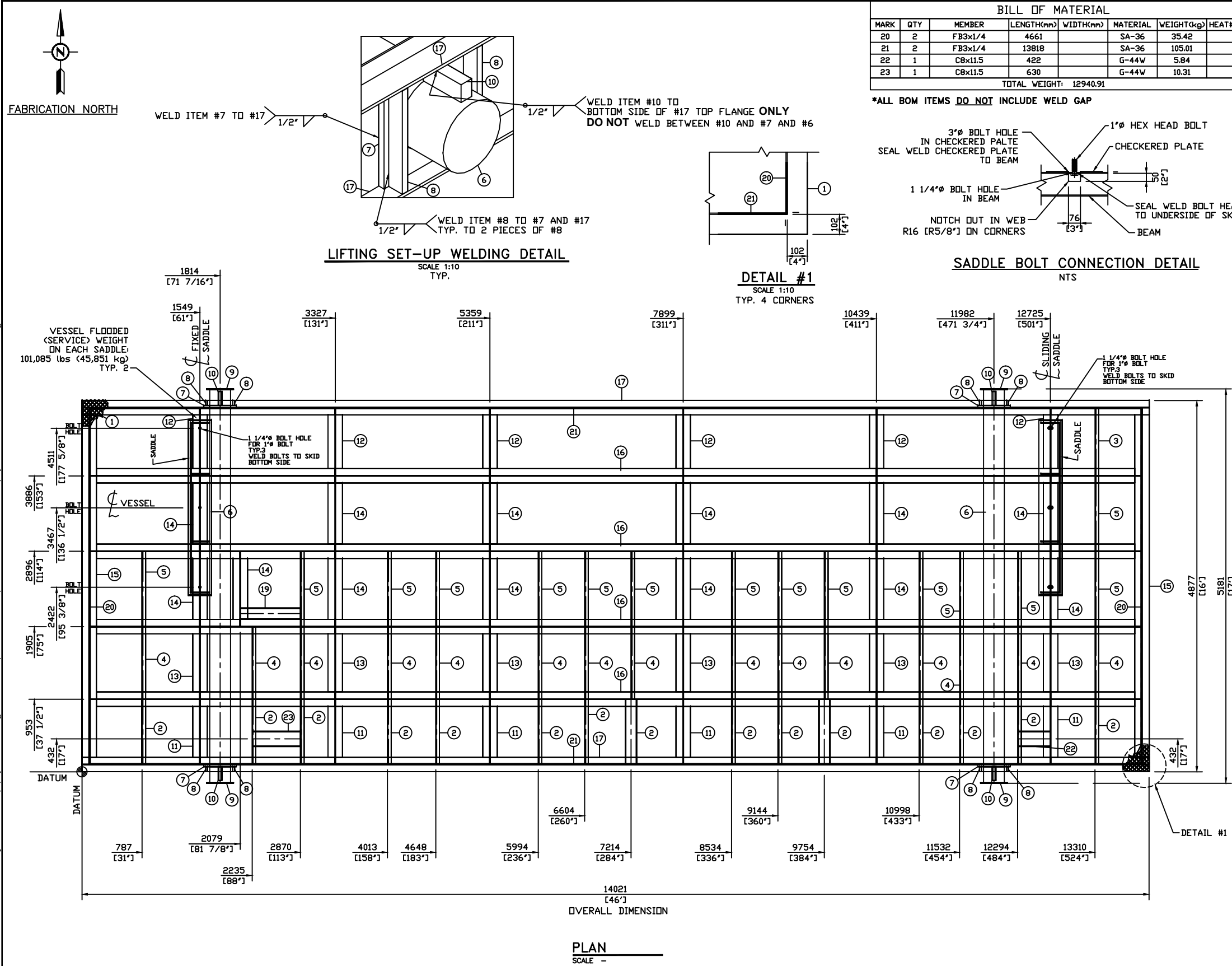


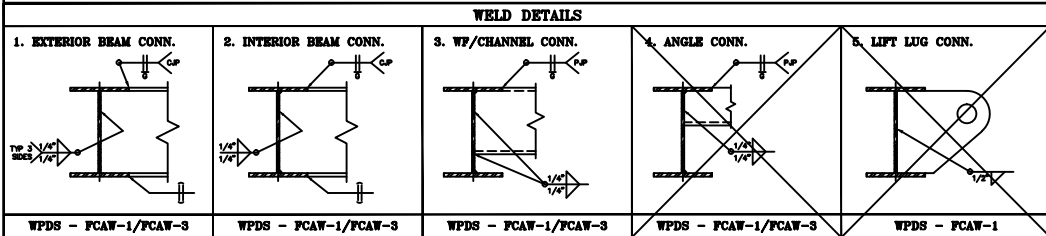
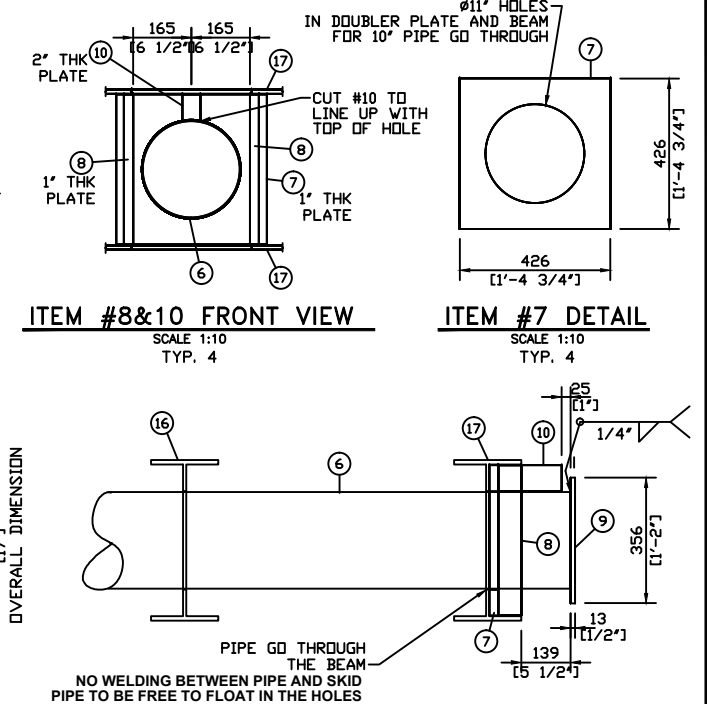
The information contained in this drawing is the confidential property of Platinum Energy Services Ltd. No part thereof shall be reproduced or communicated to a third party without written authorization from Platinum Energy Services Ltd.



BILL OF MATERIAL							
MARK	QTY	MEMBER	LENGTH(mm)	WIDTH(mm)	MATERIAL	WEIGHT(kg)	HEAT#
20	2	FB3x1/4	4661		SA-36	35.42	
21	2	FB3x1/4	13818		SA-36	105.01	
22	1	C8x11.5	422		G-44W	5.84	
23	1	C8x11.5	630		G-44W	10.31	
TOTAL WEIGHT:			12940.91				


\*ALL BOM ITEMS DO NOT INCLUDE WELD GAP

BILL OF MATERIAL							
MARK	QTY	MEMBER	LENGTH(mm)	WIDTH(mm)	MATERIAL	WEIGHT(kg)	HEAT#
1	1	1/4-Checker-PL	14021	4877	SA-36	3411.99	
2	15	C6x8.2	849		G-44W	145.81	
3	1	C6x8.2	887		G-44W	10.19	
4	15	C6x8.2	944		G-44W	163.19	
5	15	C6x8.2	982		G-44W	170.16	
6	2	PIPE10.0-120	5156		SA-53B	839.95	
7	4	PLATE-1	426	426	SA-36	95.65	
8	8	PLATE-1	426	65	SA-36	44.40	
9	4	PLATE-1/2	4356		SA-36	39.63	
10	4	PLATE-2	179	73	SA-36	20.93	
11	6	W18x45	849		G-50W/44W	299.59	
12	6	W18x45	887		G-50W/44W	314.90	
13	6	W18x45	944		G-50W/44W	337.76	
14	13	W18x45	982		G-50W/44W	764.98	
15	2	W18x45	4678		G-50W/44W	612.76	
16	4	W18x45	13822		G-50W/44W	3642.03	
17	2	W18x45	14021		G-50W/44W	1861.46	
18	6	1" HEX HEAD BOLT, 4 1/2" LG c/w WASHER/NUT			GRADE 8	-	
19	1	C6x8.2	787		G-44W	8.94	



REV	DESCRIPTION	BY	DATE	CHKD	APP'D
0	ISSUED FOR CONSTRUCTION	LL	19-12-11	BX	DG

ENGINEER'S STAMP			
CHKD BY	LL	19-12-11	
APP'D BY	BX	19-12-11	
CAD REF	DG	19-12-11	
30691-SKD-01.DWG			

DRAWN BY		LL	19-12-11	CLIENT	STOCK	
CHK'D BY		BX	19-12-11		—	
APP'D BY		DG	19-12-11		—	
CAD REF		30691—SKD—01.DWG	SCALE AS SHOWN			
 <b>PLATINUM</b> ENERGY SERVICES  <b>CALGARY, ALBERTA</b>				TITLE		
				96" ID x 40'-0" S/S 3 PHASE HORIZONTAL SEPARATOR STRUCTURAL STEEL — PLAN VIEW		
				JOB NO.	30691	DRAWING NO.