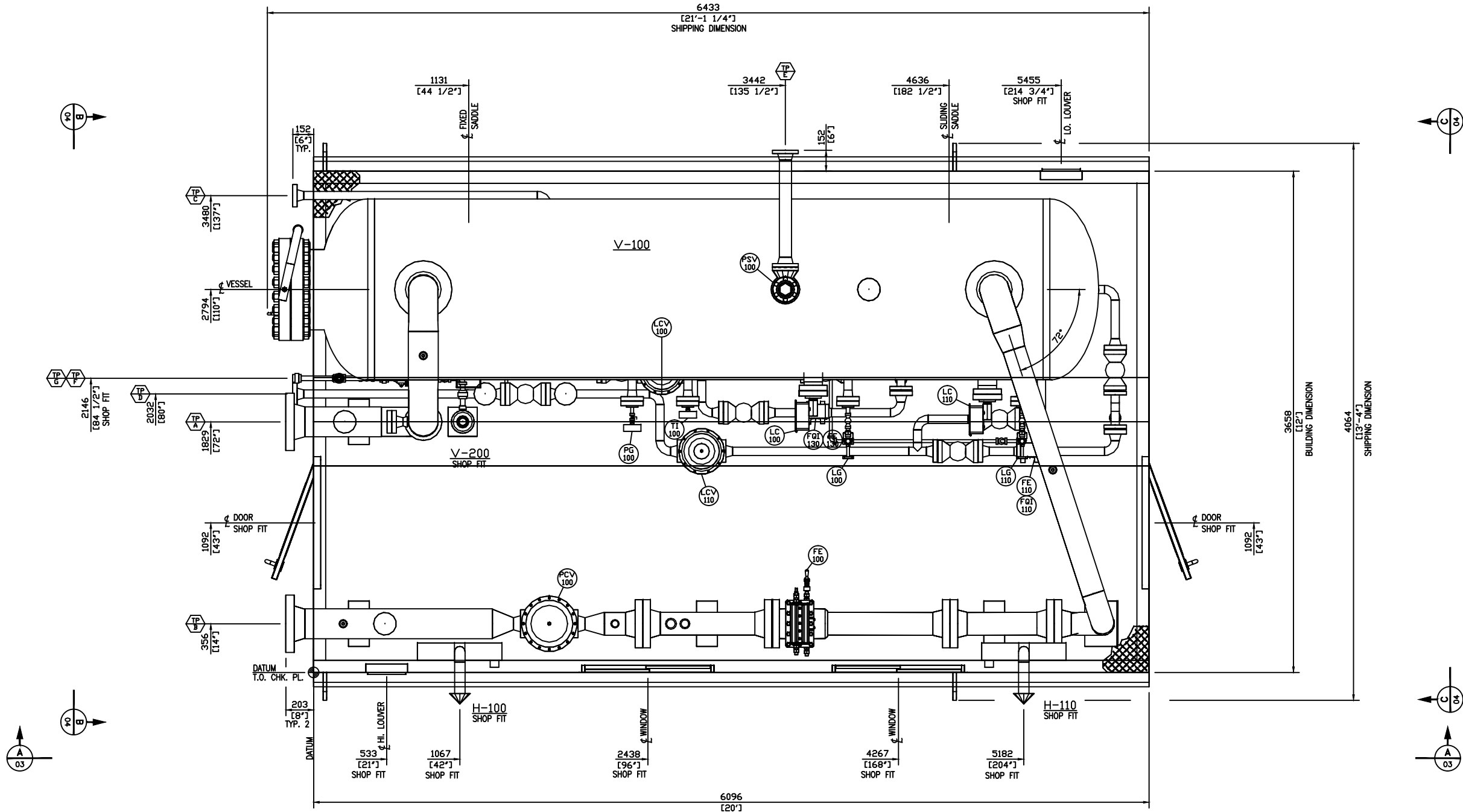


The information contained in this drawing is the confidential property of Platinum Energy Services Ltd. No part thereof shall be reproduced or communicated to a third party without written authorization from Platinum Energy Services Ltd.



TIE-IN SCHEDULE			
MARK	SIZE / RATING	ELEVATION	DESCRIPTION
A	8" 600# RF	32" [813]	GAS INLET
B	8" 600# RF	18" [457]	GAS OUTLET
C	2" 600# RF	10 3/4" [273]	WATER OUTLET
D	2" 600# RF	10 3/4" [273]	CONDENSATE OUTLET
E	3" 150# RF	99 9/16" [2529]	PSV OUTLET
F	1" NPT	28" [711]	FUEL GAS INLET
G	1" NPT	100" [2540]	FUEL GAS PSV OUTLET

NOTE: ALL ELEVATION DIMENSIONS FROM TOP OF CHECKER PLATE.



PLAN
SCALE 1:15

- NOTES:
- 1.) PIPING CODE TO ANSI B31.3 (CURRENT EDITION).
 - 2.) DIMENSIONS ARE IN MILLIMETRES.
ELEVATION DATUM = TOP OF FLOOR CHECKER PLATE.
TAIL DIMENSIONS ARE FROM PLAN DATUM.
DIMENSIONS TO CENTERLINES (UNO)
 - 3.) EQUIPMENT AND STRUCTURES EXTENDING PAST SKID
SHIPPING LIMITS ARE REMOVED FOR SHIPPING.
 - 4.) OVERALL DIMENSIONS: 21'-1 1/4" L x 13'-4" W x 12'-4 1/2" H
 - 5.) SHIPPING DIMENSIONS: 21'-1 1/4" L x 13'-4" W x 12'-4 1/2" H
 - 6.) ESTIMATED SHIPPING WEIGHT: 44,500 LB (20,185 KG)
EXCLUDING ELECTRICAL AND SHIPPED LOOSE ITEMS.
 - 7.) PIPE SUPPORTS SUBJECT TO CHANGE UPON ASSEMBLY

REFERENCE DRAWINGS	REV	DESCRIPTION	BY	DATE	CHK'D	APP'D
GA-05		GENERAL ARRANGEMENT - SE ISOMETRIC VIEW				
GA-04		GENERAL ARRANGEMENT - VIEW 'B-B' & 'C-C'				
GA-03		GENERAL ARRANGEMENT - VIEW 'A-A'				
GA-01		GENERAL ARRANGEMENT - SW ISOMETRIC VIEW				
SKD-01		STRUCTURAL STEEL				
PID-01		PIPING & INSTRUMENTATION DIAGRAM				

ENGINEER'S STAMP

DRAWN BY	CL	19-03-18
CHK'D BY	BX	19-03-18
APP'D BY	DG	19-03-18
CAD REF	30698-GA-02.DWG	SCALE AS SHOWN



CALGARY, ALBERTA

CLIENT	STOCK
TITLE	48" ID x 16'-0" S/S 1440 Psig 3 PHASE SOUR SEPARATOR GENERAL ARRANGEMENT - PLAN VIEW
JOB NO.	30698
DRAWING NO.	30698-GA-02
REV	0