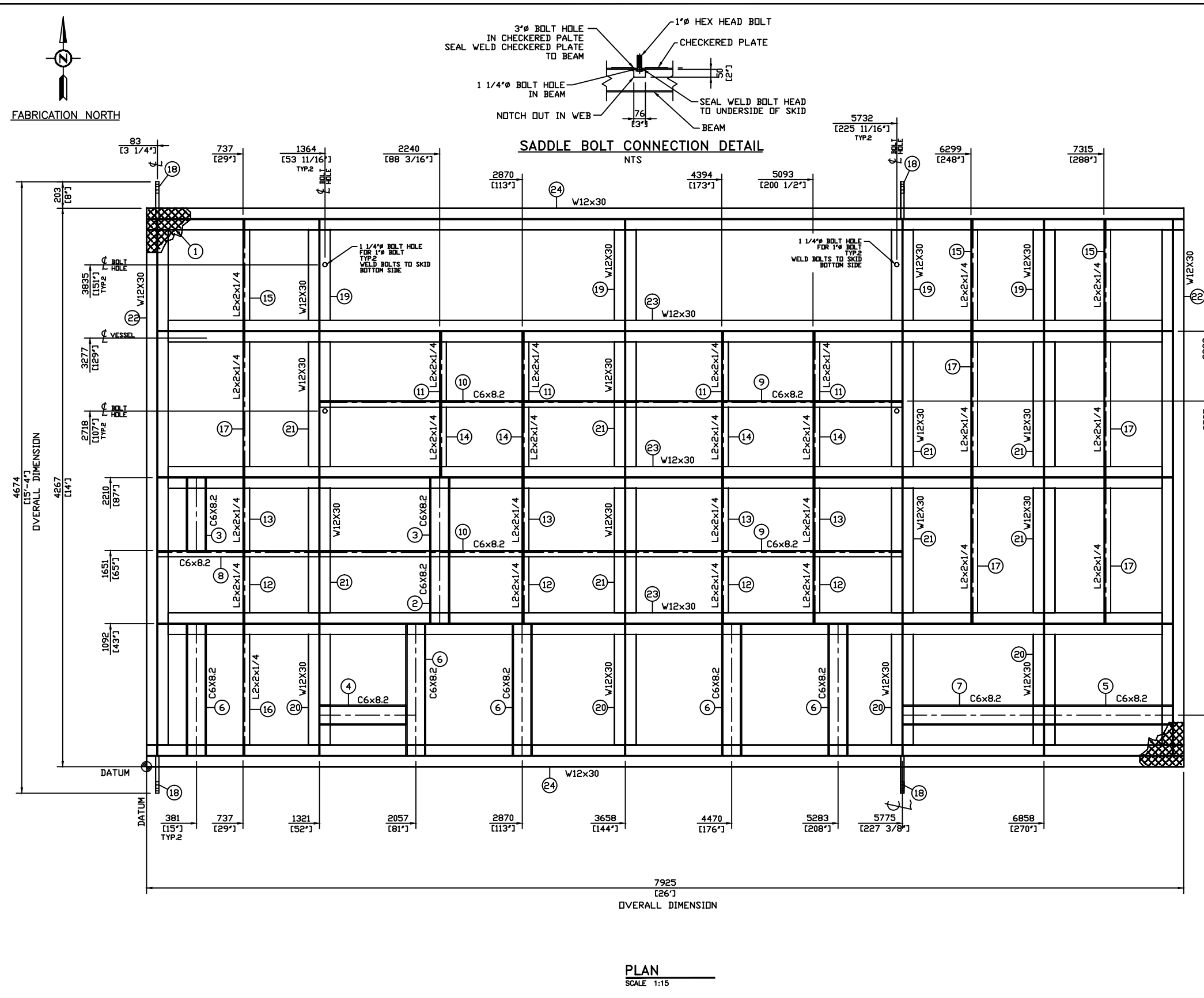
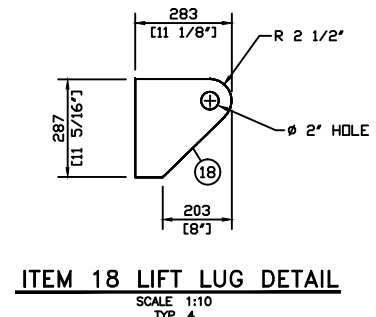


The information contained in this drawing is the confidential property of Platinum Energy Services Ltd. No part thereof shall be reproduced or communicated to a third party without written authorization from Platinum Energy Services Ltd.

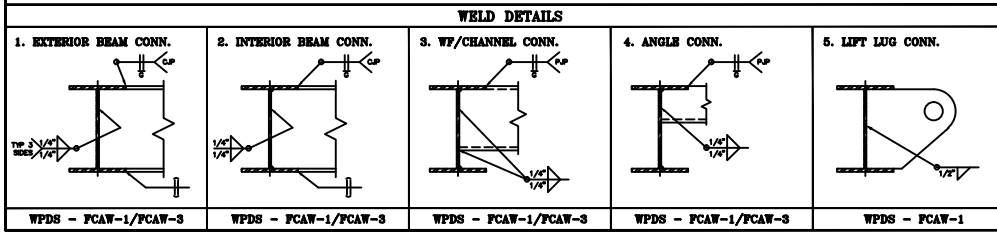


| BILL OF MATERIAL | | | | | | | |
|------------------|-----|--|------------|-----------|----------|------------|-------|
| MARK | QTY | MEMBER | LENGTH(mm) | WIDTH(mm) | MATERIAL | WEIGHT(kg) | HEAT# |
| 1 | 1 | 1/4-Checker-PL | 7925 | 4267 | SA-36 | 1687.50 | |
| 2 | 1 | C6x8.2 | 551 | | G-44W | 5.82 | |
| 3 | 2 | C6x8.2 | 556 | | G-44W | 12.43 | |
| 4 | 1 | C6x8.2 | 657 | | G-44W | 7.46 | |
| 5 | 1 | C6x8.2 | 978 | | G-44W | 10.80 | |
| 6 | 5 | C6x8.2 | 1003 | | G-44W | 55.53 | |
| 7 | 1 | C6x8.2 | 1076 | | G-44W | 12.00 | |
| 8 | 1 | C6x8.2 | 1231 | | G-44W | 14.47 | |
| 9 | 2 | C6x8.2 | 2111 | | G-44W | 50.41 | |
| 10 | 2 | C6x8.2 | 2330 | | G-44W | 55.76 | |
| 11 | 4 | L2x2x1/4 | 530 | | G-44W | 9.19 | |
| 12 | 4 | L2x2x1/4 | 551 | | G-44W | 9.06 | |
| 13 | 4 | L2x2x1/4 | 556 | | G-44W | 9.67 | |
| 14 | 4 | L2x2x1/4 | 576 | | G-44W | 9.54 | |
| 15 | 3 | L2x2x1/4 | 849 | | G-44W | 10.78 | |
| 16 | 1 | L2x2x1/4 | 1003 | | G-44W | 4.32 | |
| 17 | 5 | L2x2x1/4 | 1111 | | G-44W | 24.18 | |
| 18 | 4 | PLATE-1 | 287 | 283 | G-44W | 46.52 | |
| 19 | 4 | W12x30 | 849 | | G-50W | 132.89 | |
| 20 | 4 | W12x30 | 1003 | | G-50W | 160.25 | |
| 21 | 8 | W12x30 | 1111 | | G-50W | 359.35 | |
| 22 | 2 | W12x30 | 4095 | | G-50W | 356.18 | |
| 23 | 3 | W12x30 | 7752 | | G-50W | 1024.12 | |
| 24 | 2 | W12x30 | 7925 | | G-50W | 707.54 | |
| 25 | 4 | 1" HEX HEAD BOLT, 4 1/2" LG c/w WASHER/NUT | | | GRADE 8 | - | |
| TOTAL WEIGHT: | | | | | | 4775.75 | |

*MAIN BEAM MATERIAL G-50W TO BE CSA G40.21-50W
*ALL BOM ITEMS DO NOT INCLUDE WELD GAP



- GENERAL STRUCTURAL STEEL NOTES:**
- ALL DIMENSION ARE IN INCHES UNLESS NOTED. ALL ELEVATIONS ARE REFERRED FROM TOP OF SKID FLOOR.
 - SURFACES AND EDGES TO BE WELDED SHALL BE SMOOTH, UNIFORM AND FREE FROM FINN, CRACKS. ALSO WITH IN 2" OF ANY WELD LOCATION, FREE FROM LOOSE OR THICK SCALE, SLAG, RUST, PAINT, GREASE, MOISTURE etc. W59-13 5.3.1
 - SKID FRAMING SHALL BE OF SOLID WELDED CONSTRUCTION, 1/4" CONTINUOUS FILLET WELDS, COPE ALL FRAMING MEMBERS INTO ONE ANOTHER UNLESS NOTED OTHERWISE.
 - CHECKERED PLATE SEAMS TO BE SEAL WELDED CONTINUOUSLY ON TOP SIDE. STITCH WELDED TO UNDERSIDE AND PERIMETER USING 3/16" FILLETS 2" AT 12" INTERVALS. FCAM-1. ALL WELDS TO BE GROUND FLUSH ON BOTTOM OF SKID.
 - CLEAN ALL STEEL SURFACES PRIOR TO PAINTING TO SSPC-SP6 (COMMERCIAL BLAST)
 - PAINT: ONE COAT OF PRIMER
ONE COAT OF FINISH DTM F34 WARM GREY
 - WEIGHT OF STRUCTURAL STEEL SKID = 11,060 lbs (5,017 kg)
 - SHIPPING DIMENSIONS: 26'-0"L x 15'-4"W (7925mm x 4674mm)
 - FULL PEN WELDS ON MAIN MEMBERS.
 - STRUCTURAL STEEL SKID IS DESIGNED TO 4-POINT LIFT.
 - 1/8" FABRICATION DIMENSIONAL TOLERANCE.



| REV | DESCRIPTION | BY | DATE | CHK'D | APP'D |
|-----|-------------------------|----|----------|-------|-------|
| 0 | ISSUED FOR CONSTRUCTION | CL | 19-04-16 | BX | DG |

| | | | | | |
|------------------|--|--------------------------|--|--|--|
| ENGINEER'S STAMP | | DRAWN BY CL 19-02-25 | | CLIENT STOCK | |
| | | CHK'D BY BX 19-02-25 | | | |
| | | APP'D BY DG 19-02-25 | | | |
| | | CAD REF 30702-SKD-01.DWG | | SCALE AS SHOWN | |
| | | | | TITLE SKID FOR 60" x 20' 720 PSI HORIZONTAL SEPARATOR STRUCTURAL STEEL - PLAN VIEW | |
| | | JOB NO. 30702 | | DRAWING NO. 30702-SKD-01 | |
| | | CALGARY, ALBERTA | | REV 0 | |