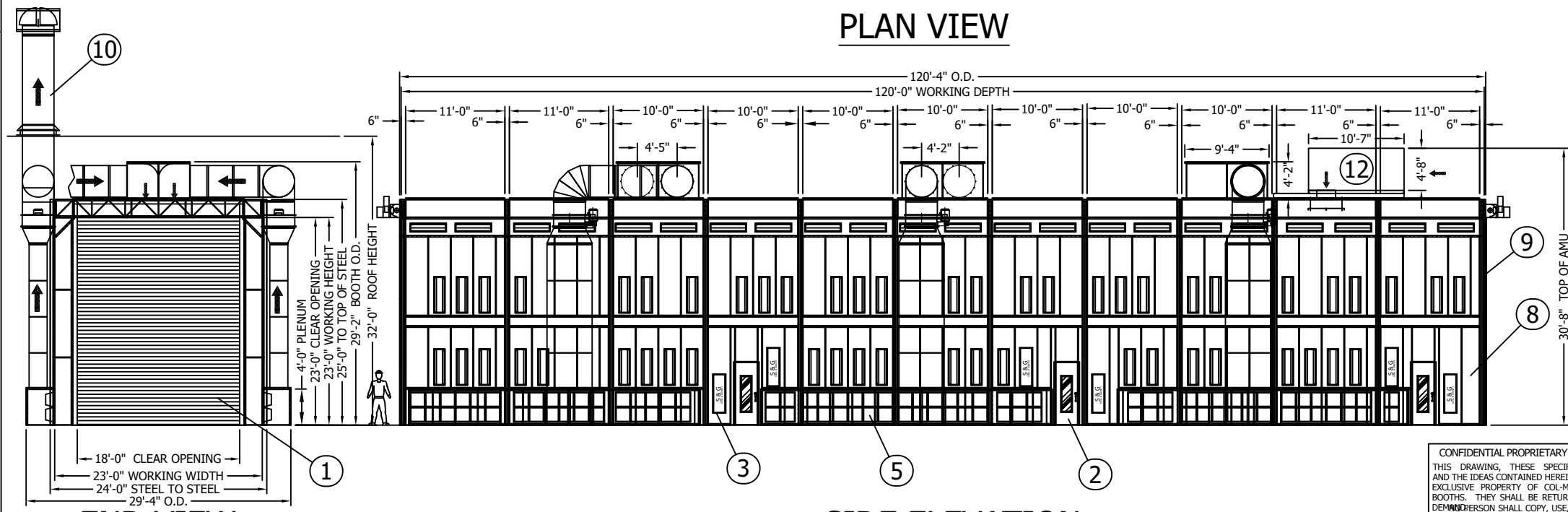


PLAN VIEW



SIDE ELEVATION

END VIEW

ITEM	QTY.	PART NUMBER	DESCRIPTION
1	2 SETS	RD-216-276	PRODUCT ROLL-UP DOOR WITH HARDWARE (PROVIDED BY COL-MET)
2	6	AD-3084-W	PERSONNEL ACCESS DOOR; 30"x84" W/ OBSERVATION WINDOW, LATCH & HANDLE
3	160	#229 & #1100A	LIGHT FIXTURES; FOUR TUBE 48"; 32 WATT FIXTURES MOUNTED BEHIND CLEAR TEMPERED GLASS PANES, "UL" RATED FOR THEIR INTENDED USE & PLACEMENT, (148 OPEN TYPE & 12 CLASS 1, DIVISION 2)
4	6	42B30420	42"Ø TUBE AXIAL FAN; RATED FOR 23000 SCFM EXHAUST EACH @ 3/4" SP; DRIVEN BY 7 1/2 HP ODP TYPE MOTOR
5	1 LOT	92020BC	2 STAGE FILTRATION (196) 4 POCKET BAG FILTER 20"x20"x15" (6) BLANKET MEDIA FILTER 60"x400" WITH ZIP LOCK BRACKETS
6	231	P372020B2	INTAKE FILTERS; 20"x20"x1" TACKY
7	6	MODEL 25	MANOMETER (NOT SHOWN)
8	1 LOT		18 GA. GALV. STEEL SHELL
9	12 SETS		VERTICAL W6X9# WELDED TO 10 GA. SUPPORT STEEL HORIZONTAL 24" TRUSS TYPE SUPPORT, POWDER COATED FINISH
10	1 LOT		RE-CIRCULATION DUCT PACKAGE: (23) 42"Ø PLAIN PIPE X 36" SECTION (SOME MIGHT BE FIELD CUT TO FIT) (6) 42"Ø-90° ELBOW EXHAUST DUCT PACKAGE: (1) 42"Ø M&M CONNECTION RING (1) 42"Ø AUTOMATIC ROOF VENTILATOR WITH M&M CONNECTING RING (1) 42"Ø FLAT ROOF FLASHING W/ STORM COLLAR (12) 42"Ø SPIRAL PIPE X 120" LONG WITH CONNECTING RING BOTH ENDS UNLESS OTHERWISE NOTED, ALL DUCT SUPPORT TO BE PROVIDED BY OTHERS
11	30		CASES OR 25 EACH COLOR CORRECTIVE LIGHT FIXTURES (NOT SHOWN)
12	2	AA-5	ABSOLUTAIRE (TM) AIR MAKE-UP UNIT, HORIZONTAL, INDOOR, DOWN DISCHARGE SUPPLIED BY OTHERS, DISCHARGE DUCTWORK BY COL-MET.

ADDITIONAL DUCTWORK SUPPORT TO SUIT FIELD CONDITIONS TO BE SUPPLIED BY OTHERS.
ALL ANCHOR BOLTS TO BE SUPPLIED BY OTHERS.

COL-MET SPRAY BOOTHS ARE MANUFACTURED IN ACCORDANCE WITH NFPA-33.
BOOTH WALLS & CEILING PANELS FABRICATED OF 18 GA. GALVANIZED STEEL IN ACCORDANCE WITH NFPA-33 CHAPTER 5.1.4.
SEE ORDER ACKNOWLEDGEMENT FOR COMPLETE LIST OF PROVIDED STACK, AND OPTIONAL COMPONENTS.

IMPORTANT NOTICE:
IN THE CONSTRUCTION OF THIS BOOTH THERE MAY BE POSSIBLE FIELD MODIFICATIONS BY THE INSTALLER. THESE MODIFICATIONS MAY INCLUDE, BUT ARE NOT LIMITED TO:

- WELDING
- CUTTING
- NOTCHING
- DRILLING

GENERAL NOTES:

1. WORK CHAMBER WILL BE BOLTED CONSTRUCTION WITH 5/16" BOLTS ON STANDARD 6" CENTERS
2. WORK CHAMBER TO BE 18 GA. GALVANIZED UNPAINTED SHEET METAL EXCEPT AS NOTED.
3. ALL MOTOR CONTROLS, SWITCHES, LIGHT LAMPS OR TUBES, INCLUDING CONNECTIONS TO EQUIPMENT TO BE FURNISHED AND INSTALLED BY CUSTOMER EXCEPT AS NOTED.
4. AMPLE AIR MAKE-UP AND AIR SPACE WITHIN FRONT OF BOOTH MUST BE PROVIDED IN ORDER TO INSURE PROPER OPERATION OF BOOTH.
5. ALL LOCAL, CITY, & STATE PERMITS AND INSURANCE APPROVAL TO BE OBTAINED BY CUSTOMER.
6. CUSTOMER TO FURNISH ROOF PITCH, STACK QUANTITY AND CONFIGURATION IF REQUIRED.

For information on installation of the booth and components, please see our web site at www.colmetsb.com, click on "Resources" on the left side of the page, and then click on "Install Manual".

CONFIDENTIAL PROPRIETARY NOTICE
THIS DRAWING, THESE SPECIFICATIONS, AND THE IDEAS CONTAINED HEREIN ARE THE EXCLUSIVE PROPERTY OF COL-MET SPRAY BOOTHS. THEY SHALL BE RETURNED UPON DEMAND. NO PERSON SHALL COPY, USE, OR DISCLOSE THIS DRAWING, THESE SPECIFICATIONS, OR THE IDEAS CONTAINED HEREIN WITHOUT THE EXPRESS CONSENT OF COL-MET SPRAY BOOTHS. IT IS THE RESPONSIBILITY OF THE RECIPIENT TO CHECK ALL DETAIL INFORMATION AGAINST THE CONTRACT DOCUMENTATION. COL-MET SPRAY BOOTHS ACCEPTS NO LIABILITY OR RESPONSIBILITY FOR ANY LOSS OR DAMAGE SUFFERED AS A RESULT OF (OR CONNECTED WITH) THE USE OR MISUSE OF THE CAD DATA SUPPLIED FOR INFORMATION ONLY. ONCE THE DATA IS INTRODUCED INTO YOUR OWN CAD OR OTHER SYSTEM, COL-MET SPRAY BOOTHS CAN TAKE NO RESPONSIBILITY FOR ITS ACCURACY.



COL-MET SPRAY BOOTHS
1635 INNOVATION DR.
ROCKWALL, TEXAS 75032
PHONE (972) 772-1919
FAX (972) 772-1833
WWW.COLMETSB.COM

ORDER #:	24677.0	TITLE:	TSD-2323-120-PDT
APPROVAL BY:	SK	DISTRIBUTOR:	MARCO USA
DATE:	12/15/10	END USER:	DSME TRENTON
RETAILED BY:	SK	CUSTOMER P.O. #:	266160
DATE:	1/6/11	FILE NAME:	108-2323-120-02-03.dwg
ORDER DATE:	12/07/10	SCALE:	NTS
		SIZE:	ANSI_B (11.000 x 17.000 Inches)
		SHEET:	1 OF 8

ANCHOR BOLTS BY OTHERS
DUCTWORK SUPPORT BY OTHERS